



NOTE! Most of the objects at Gdańsk University of Technology are open to public only with a guide. For appointments, please contact the Department of Promotion, email: promocja@pg.gda.pl



Gdańsk University of Technology
G. Narutowicza 11/12
80-233 Gdańsk
www.pg.edu.pl

GUIDE OF HISTORIC PLACES



- LEGEND**
1. Main Building
 2. Information Centre
 3. Main Reception
 4. Faculty of Chemistry Building A
 5. Nanotechnology Centre A
 6. Faculty of Chemistry Building C
 7. Waste and Chemical Reagents Storage
 8. Faculty of Chemistry Building B
 10. Building B
 11. Hydromechanics Building
 12. Faculty of Electrical and Control Engineering Building

13. Faculty of Chemistry Building D - Chemical Technology Utility Building - 'Misiówka'
15. Faculty of Mechanical Engineering Building - Machine Laboratory
16. Faculty of Civil and Environmental Engineering Building - Kuźnia (Forge)
17. Auditorium Novum
18. Nanotechnology Centre Building B
19. Operation Department Building
20. Faculty of Civil and Environmental Engineering Building with hall
21. Faculty of Civil and Environmental Engineering Building (Zelbet)
22. Civil Engineering Laboratory (Zelbet)
23. Bratniak
25. Mathematics Teaching and Distance Learning Centre
26. High Voltage Building
27. Knowledge and Entrepreneurship Centre

29. Health Care Building
30. Faculty of Ocean Engineering and Ship Technology Building
31. Faculty of Ocean Engineering and Ship Technology - Model Pool
32. Utility Building - Woodwork
33. Utility Building - Upholstery Workshop
40. Faculty of Mechanical Engineering Building
41. Faculty of Electronics, Telecommunications and Informatics Building A
42. Immersive 3D Visualisation Lab
43. Faculty of Electronics, Telecommunications and Informatics Building B
44. Yugoslav Pavilion 1
45. Yugoslav Pavilion 2

46. Yugoslav Pavilion 3
47. Yugoslav Pavilion 4
50. Faculty of Management and Economics Building
60. Faculty of Electrical and Control Engineering Building - Linie*2
61. Faculty of Electrical and Control Engineering Building C
62. Faculty of Electrical and Control Engineering Building B
63. Faculty of Electrical and Control Engineering Building A
64. Faculty of Electrical and Control Engineering Pavilion
70. Academic Sports Centre - Sports Hall
71. Academic Sports Centre - Swimming pool
72. Tent Hall with tennis court
73. Model building Workshop, Academic Sports Centre
80. Utility Building 3
81. Utility Building 5
82. Utility Building 4
83. Utility Building 6
110. DS-3
112. DS-4
113. DS-12
114. DS-1
115. DS-2
116. Wirtualna Polska Utility Building
120. DS-6
121. DS-5
122. DS-10
123. DS-7
124. DS-8
125. DS-9

map 1



The **main building** was built between 1900 and 1904. It was designed by Hermann Eggertt and Albert Carsten, and constructed simultaneously with Electro-Technical Institute, Machine Laboratory and the faculty of Chemistry. All of these buildings were built in the style of the Northern Renaissance with Art Nouveau elements.

map 1



The facade of the main building is decorated with numerous stone sculptures, which refer to the symbolic use of the building. Above the main entrance there is the head of **Medusa** which protects the building against intruders and personifies energy.

map 1



The sculptures located over the eastern side gate show a **lighthouse** and the tower of **St. Mary's Church**, over the western gate: partially destroyed symbol of a locomotive and a bow of a ship.

map 1



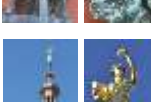
Above the windows of the high ground floor there are placed **images of Prussian scientists and pioneers** of the nineteenth century technology: the architect Karl Friedrich Schinkel, Physicist Gotthilf H.L. Hagen, a manufacturer of locomotives Johann F. A. Borsig and naval architect Ferdinand Schichau.

map 1



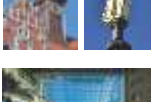
Roof drainage installation is decorated by four **copper spouts** in the form of men holding water creatures.

map 1



The **Clock Tower**, destroyed in 1945, returned to the roof of the Main Building on May 13, 2012. The tower is 18 meters high and weighs 15 tons. It is crowned with a gilded sculpture of the Allegory of Science.

map 1



The main building includes inner courtyards, covered with **glass vaults** in 2004, designed by W. Czabański and Z. Wilk.

map 1



Foucault's Pendulum is used to demonstrate the rotation of the Earth on its axis. It has been named after the French physicist who first performed a similar experiment in 1851 in the Paris Pantheon. The device, which appeared in 2005 in the South Courtyard, is a 64kg metal disc suspended on the arm length of 26 m. The observation of oscillations is facilitated by a laser beam. An electromagnet mounted at the point of suspension supports oscillations. They would phase out without it after a certain time.

map 1



In the window niches over the Foucault pendulum there have been mounted reliefs depicting a portrait of **Johannes Hevelius**, the design of reflective sundial (left), and a rotating map of the sky with a sextant. They have been made by Robert Kaja.

map 1



In October 2013, in the North Courtyard we unveiled a **relief of a great Gdańsk citizen – D.G. Fahrenheit**, physicist, engineer, inventor and founder of a mercury thermometer temperature scale. In one of the window niches there is a portrait of the great physicist. The other is covered with a thick glass pane. The upper part of the installation resembles a web of blood vessels, while the bottom part, tinted in blue, shows the crystal structure seen on the glass during cold weather. In the middle there is Fahrenheit thermometer.

map 1



Antique gas meters | In 1904, with the construction of buildings of the university, an inner gas network was opened. It began right at the main reception building. The main valve and gauges measuring the gas consumption were placed in a separate room. Permanent exhibition of historic water gas meters at Gdańsk University of Technology, located in their primary measuring stations since their installation to date, includes the preserved fragments of the installation.

map 2



Guardhouses at the main entrance gate | These are two small buildings located symmetrically with respect to the main axis, in front of the Main Building. On the east side there is an old porter house (with the symbol of a key) and the cottage, which officially was a "cottage of master electrician", with the symbol of a flower (probably the gardener's house). After modernisation they became the headquarters of the Department of Promotion and the main reception.

map 2



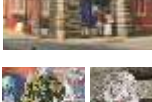
Two lions, placed on the balconies of both houses | The lion on the eastern side holds the coat of arms of the city of Gdańsk.

map 2



Owl Sculpture | At the porter house there is a reconstructed life-size sculpture of an owl, the symbol of knowledge and wisdom.

map 2



map 15



Machine Laboratory | Towering above the historic buildings of Gdańsk University of Technology campus, the ancient chimney, together with the adjacent water tower, were built as part of the Machinery Laboratory. Constructed in 1904 and designed by Hermann Eggertt and Albert Carsten, the Laboratory met the needs of the university in terms of heat, water and electricity, and served the needs of teaching. The Laboratory consisted of a basement machine room, adjacent boiler house, the chimney situated between them and of the adjacent water tower and a set of rooms. The design of equipment was prepared by Prof. Josse. In 1945 it was the first intervention power plant in Gdańsk, which served the residents of Wrzeszcz. The Laboratory was expanded and modernized in 1994-1997. The building retains many monuments of technology.

map 12



Cooling tower | The cooling tower and the building of the machine operator were erected near the Laboratory. It was used for cooling water in the closed circuit. The 28-metre steel cold store structure was set on a granite foundation behind the machine hall. The lower part is a cold sprinkler that had an oval cross-section and served as a heat exchanger. On the oval part the circular chimney was set, used to achieve the free draft of air. The helmet of the cooling tower was crowned with a spearhead.

map 12



Building of the Faculty of Electrical and Control Engineering | The building of the Institute of Electrical and Control Engineering (Elektrotechnisches Institute) was established in 1900-1904, and was designed by Hermann Eggertt and Albert Carsten. It consisted of four parts of distinctive surface and space interconnected with a corridor: workshops and laboratories with a small auditorium hall, machine hall (Drive Hall), an auditorium hall and laboratories, and the drafting hall with additional rooms. Today, the building is named after Prof. Kazimierz Kopecki. The building now houses large auditoriums, renovated auditorium E1 and historic auditorium E41 named after Prof. Stanisław Szpor. After extensive renovation and restoration it recaptured its appearance from 1904. Completed in 2011, the renovation, modernization and providing the historic rooms with modern audiovisual equipment and ICT technologies, was funded by the project "Modern Auditoriums at Gdańsk University of Technology." One of the most interesting sculptures throughout the university complex is mounted on the façade of the building. It shows a couple kissing – a young woman with an ear of grain and a man with a torch in his hand.

map 12



Auditorium E1 | The laboratory building was erected as an extension to the main building. Between 2006 and 2008. Reconstruction of the interior of the laboratory of Electrical Drives classroom took place and the room was changed into a lecture auditorium. At the back of the E-1 auditorium there is a permanent exhibition of historic electrical metrology equipment.

map 14



The building of the Faculty of Chemistry – "Old Chemistry" | Building of the Institute of Chemistry (Chemisches Institut) was one of the first buildings built in 1900-1904 for Gdańsk University of Technology. The main entrance is decorated with a portal that includes a set of symbols related to the purpose of the building. Above the entrance arch there is a decorative cartouche (currently with the inscription "CHEMISTRY") topped with a triangular open tympanum. Revitalization of the north wing of the building of Chemistry A, including Chemical Auditorium and infrastructure rooms, was completed in 2010.

map 4



Periodic Table | Discovered during the renovation of the Chemical Auditorium and renovated, the periodic table painted on the wall in 1904, contained the chemical knowledge of the early twentieth century.

map 4



Symbols of chemical elements | The symbols of chemical elements are evenly spaced along the top edge of the side wings of the facade of the Faculty of Chemistry building. These are 24 characters - strongly stylized letters of the symbols of chemical elements. They have been divided into 4 groups of six symbols each. On the west wing the symbols of nonmetallic elements are placed, while on the east one - metals. The elements are described with the symbols used in the late nineteenth and early twentieth century.

map 4



GUT Chemical Auditorium | After the renovation the inside of the auditorium regained its look from the early twentieth century. The historic Auditorium maintained 80 percent of the original accessories and interior design: decorative painting of walls, decorative architectural elements of arches, laboratory tables, chairs with back supports and desks. Stoneware laboratory sinks have also survived, together with wooden windows - including door handles, fittings and hinges; doors, window shutters housing together with electric motors. The Auditorium is also equipped with multimedia devices essential in modern science and teaching - projectors, sound system, camera system, which allow organising tele-lectures over the Internet.

Gdańsk University of Technology building complex is registered in the Historic Monuments Register by decision No 828, dated 04.30.1979; currently under the number 969 (the new number in the register of monuments).