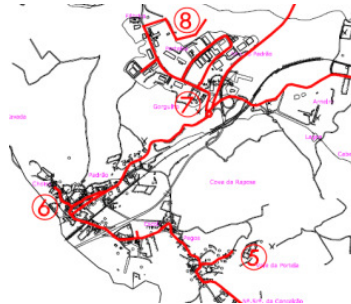
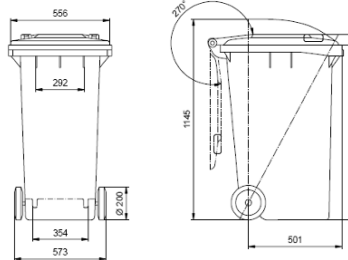


eco gestus

*Solid Waste
Urban Cleaning*



Solid Waste Management and Urban Cleaning
- Engineering & Consultancy -



WHO WE ARE, WHAT WE DO

Introducing best practices and solutions in the Municipal Solid Waste (MSW) field, Collection and Treatment; and Public Cleaning sector; are our aim.

Lack of efficiency often appears due to the absence of a technical-scientific approach to waste management and public cleaning. Our methods consist in fully understanding how waste flows, which is done by investigation, documenting the problems, analyzing them, comparing them to the best available practices, interacting with the operating agents of change, implementing new organizational projects and by developing coherent strategies. Thus, transparent, independent and rigorous models of decision are created.

Training operators and decision makers improves organizations ability to act according to pre-established requirements. Our aim, do more with less by increasing human resources productivity.

We act by the positive: people, when motivated, join environmental projects, from recycling to domestic composting; waste is a resource not a source of nuisance and health threat.

We contribute to improve the performance of our customers' organizations, increasing the standards of quality of the services provided.

A handwritten signature in black ink, appearing to be 'João Miguel V.G. Vaz', written in a cursive style.

João Miguel V.G. Vaz



Our mission is to provide the public and private sector with the means and the knowledge required to achieve environmental and economical efficiency

VISION

A multidisciplinary team with experience in many case-scenarios, including rural and urban, national and international, allows us to recommend the best solutions to our customers. Quality, service, reliability and full satisfaction of our customers are the criteria we use.

OUR MISSION

- Technical support in the sector of waste, cleaning and public health
- Consultancy, audit, reports and surveys
- Optimization and logistic rationalization with application of specific software to the organization of collection/transport of waste
- Dimensioning of integrated systems for the management of MSW
- Tax models (Pay As You Throw) applied to MSW and Public Cleaning
- Organization of environmental awareness campaigns
- Organizing applications to funding programs
- Stewardship in the implementation of solutions
- Training operators, decision makers and agents of change



We perform optimization of the waste collection routes with reliable productivity gains

MUNICIPAL SOLID WASTE

EVALUATION AND ASSESSMENT

- Physic-chemical characterization according to European standards
- Survey, analysis and diagnostic of the situation – status quo
- Evaluating systems operating costs
- Contract provisions conception and analysis
- Forecast for the quantities of waste produced in various areas (residential, commercial, agricultural and industrial)
- Studies centered on economical viability
- Waste prevention and minimization plans

LOGISTICS

- Innovative systems for waste collection (different types of vehicles, containers)
- Inventory, analysis and diagnosis of waste management systems
- Planning and optimization of waste collection
- Organization models and staff management
- Studies on collection frequency
- Fleet management
- Software applied to collection routes, using GPS – Systems
- Operative characteristics and cost analysis
- Container identification systems
- Innovative collection systems



The Polluter Pays Principle favors the best environmental practices

MUNICIPAL SOLID WASTE

TARIFFS APPLIED TO MSW

- Revenue and expenditures reports
- Decision models including several variants
- User-Polluter-Payer or Pay-As-You-Throw principle implementation
- Campaign promoting transparency and adoption of the above concepts
- Legal framework evaluation
- Integration of the social equity and financial sustainable development

FIELDS OF INTERVENTION

- Development of integrated projects for collection in rural/urban areas
- Organization of the organic waste valorization (composting, collection of garden waste)
- Planning waste management for cemeteries, parks, festivals and other events
- Establishment of programs for the collection of other MSW flows (domestic hazardous, hospital, sludge...)

We assess Urban Cleaning performance by implementing the best practices and respecting the environment.



Quality of life implies a clean and healthy environment

URBAN CLEANING

An inadequate urban cleaning service has negative implications in the environment, the natural resources and the quality of life of populations apart from representing intangible losses in urban space qualification and attraction.

EFFICIENCY ASSESSMENT OF URBAN CLEANING

- Definition of criteria that enables the assessment of the cleaning services
- Definition of sanitary and environmental goals
- Productivity quantification (km *per* hour; cleaning cost *per* area)
- Introduction of optimized models and routines by considering: street characteristics, manual sweeping vs mechanical, route optimization
- Contract provisions conception and analysis
- Multimedia documentation of cleaning services
- Benchmarking – comparison with best practices of national and foreign entities

COSTS AND TARIFFS

- Conception of specific tariffs
- Basis and accounting of all costs

Measure to know and to act

eco
gestus

address

office: rua D. Afonso IV, 23, 2º - Buarcos

3080-328 Figueira da Foz

telephone: +351 233109034

mobile: +351 965784613

e-mail: contacto@ecogestus.com

url: www.ecogestus.com

eco
gestus