



■ Fourth B.I.S.S. 2018

The 1. B.I.S.S. was **the foundation stone** for the initiation of the BelInterBaltic project and opened up a continuous dialogue.

The B.I.S.S. 2018 is a part of the project BelInterBaltic which is implemented within the ERASMUS+ program strategic partnerships.

The third B.I.S.S. will strengthen the academic exchange on all levels.

Dates and Data

The duration of the Summer School is **9 days**.

Friday 10.08. – Saturday 18.08.2018

- **Arrival** on Thursday the 9th, 2018
- **Departure** on Sunday the 19th, 2018

August 2018

Week 33

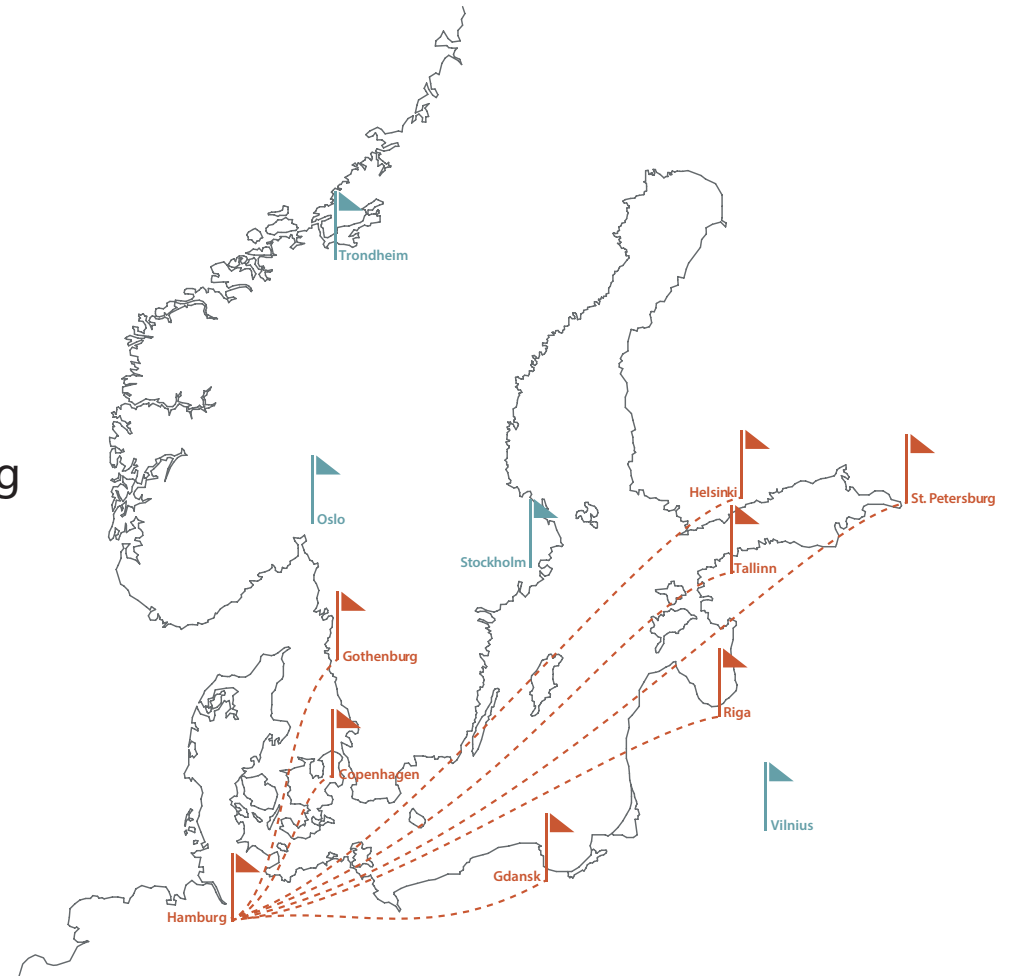
M	T	W	T	F	S	S
		01	02	03	04	05
06	07	08	09	10	11	12
13	14	15	16	17	18	19
20	21	22	23	24	25	26
27	28	29	30	31		

Universities Cities

7 cities
10 schools

Aalto University | Helsinki
Chalmers University of Technology | Gothenburg
Royal Academy of Fine Arts | Copenhagen
Technical University of Denmark | Copenhagen
Tallinn University of Technology | Tallinn
Gdansk University of Technology | Gdansk
HafenCity University | Hamburg

additional guests from:
ITMO University | St. Petersburg
GASU | St. Petersburg
RTU | Riga



Organisational Participants

7-8 students per university,
so that both the disciplines and the universities are equally represented:

- 8 Students GUT
- 9 Students Aalto University
- 8 Students TUT
- 8 Students Chalmers
- 7 Students DTU Cph
- 7 Students RA Cph
- 8 Students HCU
- 8 guests ITMO + GASU + RIGA + ...

ca. 60 Students (up to 65) in total



CHALMERS

Danmarks
Tekniske Universitet



University of Applied Sciences, Tampere University of Applied Sciences
for Applied Sciences, Design and Communication



GDĄŃSK UNIVERSITY
OF TECHNOLOGY



TALLINNA TEHNIKAÜLIKOOL
TALLINN UNIVERSITY OF TECHNOLOGY

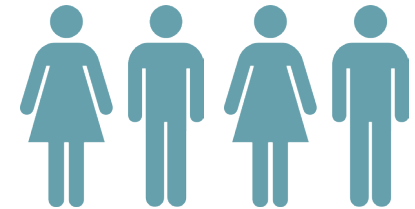
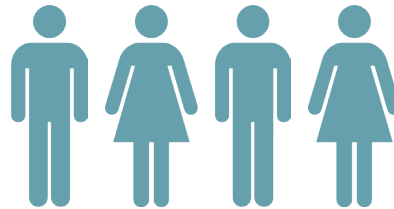
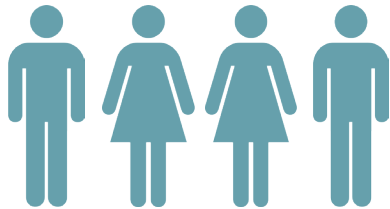
HCU

HafenCity Universität
Hamburg

Participants

Interdisciplinary groups

The B.I.S.S. is designed for students preferably at Master's level. Nevertheless students at Bachelor's and PhD level can also submit their applications.



architecture + civil engineering + urban planning + related disciplines
urban design, fine | performative arts, philosophy...

Costs

Formalities

Participation fee:

- The partner universities' students are **FREE** of charge.
- 450 € per applicant (for students from guest universities)

The workshop includes:

- **guest lectures**, **course material** and access to **printing facilities** and the **HCU model workshops**
- a number of **social activities** during the whole Summer School (picnic, city tour, excursion, welcome and farewell party...)
- **accommodation** including breakfast for ten nights: Thursday, 09.08. - Sunday, 19.08.18
a contingency of beds is reserved at the youth hostel including breakfast
- at least one **daily meal** at HCU mensa: lunch
- **public transportation** in Hamburg

The workshop does **NOT** include:

- access to the university PC Pools. So please, bring your own laptop and electronic devices for your own use.

Application Formalities

Important: balance between disciplines:

1/4 Architects + 1/4 Engineers + 1/4 urban planners and urban designers + 1/4 related disciplines

- **Submission deadline 02.04.2018 | 24:00**
to the contact person at your university (check the website)
for the HCU students, please send your application to:
Emiliya Popova
emiliya.popova@hcu-hamburg.de
- **10.04.2018**
notification of all selected participants.

Application Requirements

- **Papers requested:**
 - CV
 - Short letter of motivation
 - Task: justify your motivation for the participation in the BISS with an A4 page presenting one or more images | sketches | drawings, illustrating and supporting your cover letter.
- **Criteria for selection:**
 - Creativity
 - Individualism
 - Motivation
 - Engagement
 - Fluent English

The choice of participating students is up to the particular home university.

Workload Credits

5 ECTS credit for the successful attendance.

Including preparation and postprocessing at the home university.
5 ECTS equal **150 hours** of work and participation:

- **ca. 78 hours** attendance at the Summer School in 9 days
- **ca. 72 hours** preparatory presentations and postprocessing

Workload Preparation

- **preparation** before the Summer School at the home university

- **task 1**

The students prepare small **presentations** (poster or video) showing a first analysis of their home city and its transition places.

- **task 2**

The students analyse their own tools and methods in creative work and show them on a poster using sketches, drawings, models, photographs, texts. (prefabricated layout)

The results will be presented during the Summer School. (prefabricated layout)

Workload

Postprocessing

- **postprocessing** after the Summer School at your home university:
Participation in the final documentation.

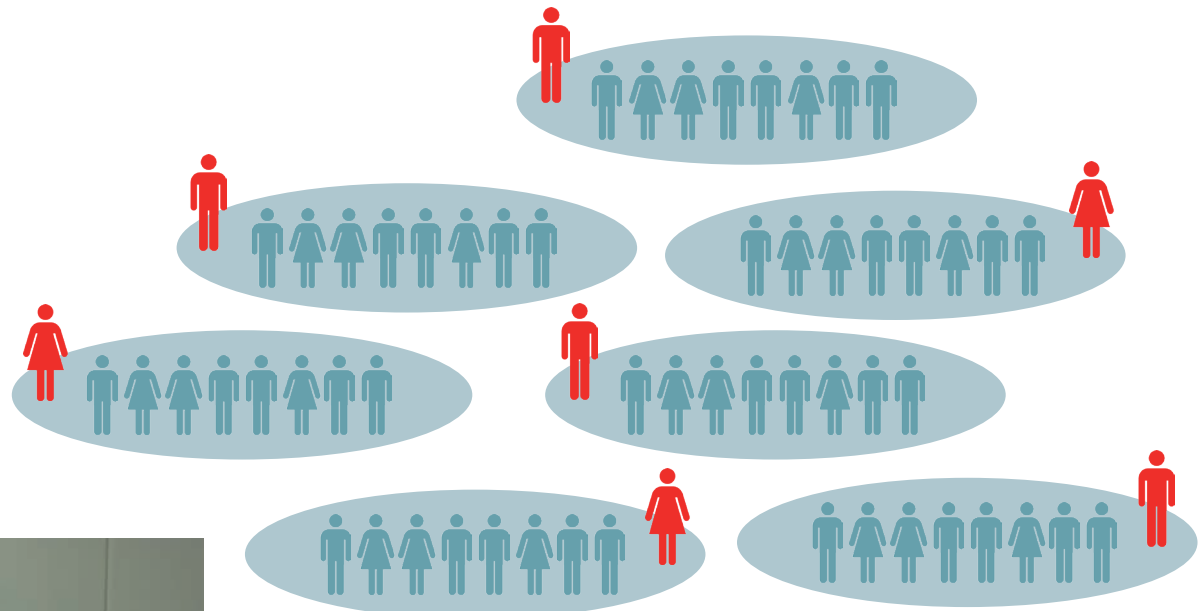
The entire group of students will process a **documentation** containing the outcome of the B.I.S.S.

It will sum up all the provided projects as well as personal reports.

The sophisticated documentation will serve as a personnel and university **reference**.

A **certificate for participation** will be handed.

Structure Mentoring system



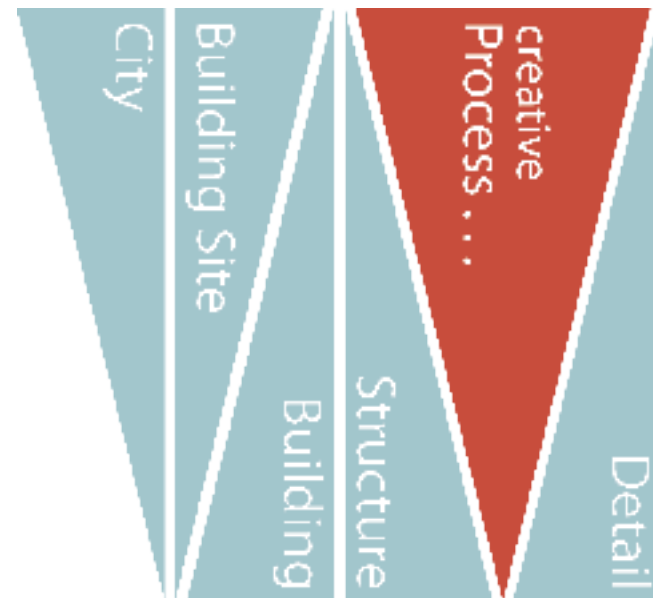
Structure Schedule

0	Thursday	09.08.18	arrival
1	Friday	10.08.18	kickoff - city tour - picnic - keynote - party => find your group
2	Saturday	11.08.18	expedition - group work => find your focus
3	Sunday	12.08.18	morning input - group work - keynote
4	Monday	13.08.18	morning input - group work - experts
5	Tuesday	14.08.18	morning input - group work - keynote
6	Wednesday	15.08.18	morning input - group work - experts
7	Thursday	16.08.18	morning input - group work
8	Friday	17.08.18	morning input - group work => finish your presentation
9	Saturday	18.08.18	prepare your presentation - final presentation - party
10	Sunday	19.08.18	departure

► Motto and Topic Methods and Process

„think the link“

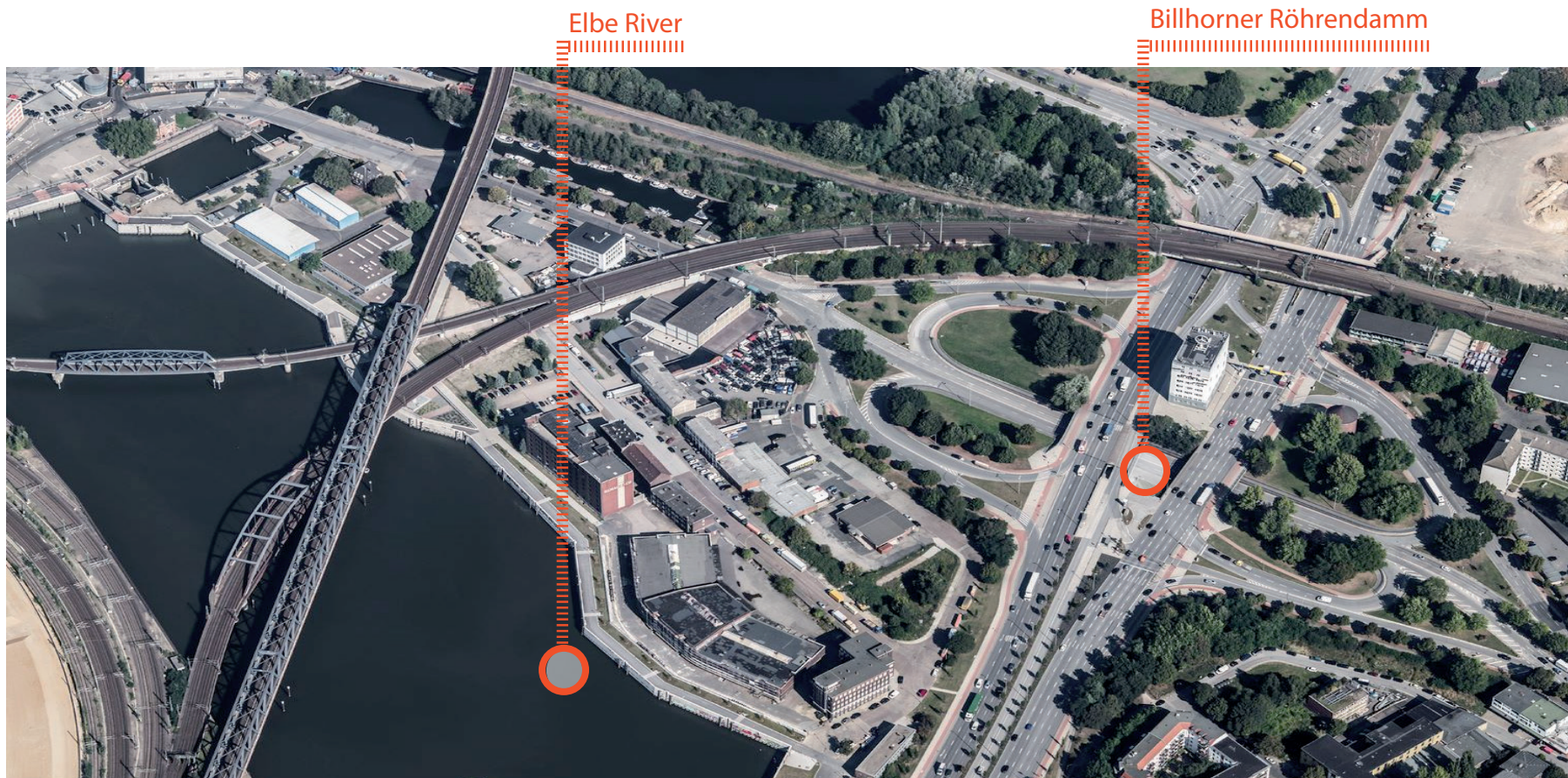
investigate needs
analyze situations
develop phantasies
design a connection
think of variants
discuss solutions
create a link





Topic

„Beyond Urban Flows - Architecture and Engineering for Transition Places“.



Source: BingMaps, 2018

the projects will take place in the traffic junction „**Billhorner Brückenstraße / Billhorner Röhrendamm**“ just east from Hamburg`s city center

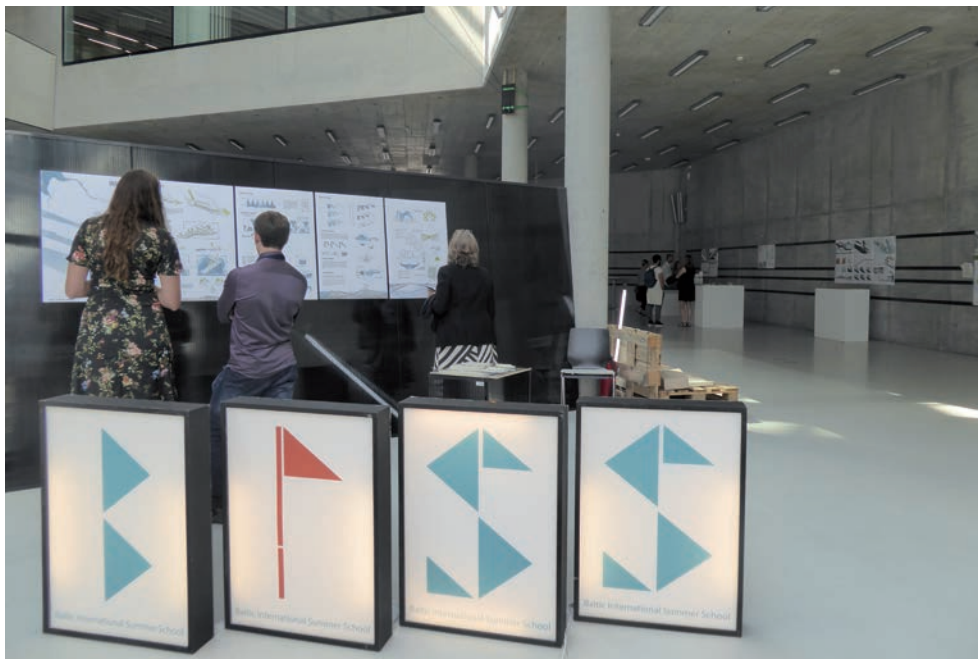
▲ **Memories...** Impressions from B.I.S.S. 2017

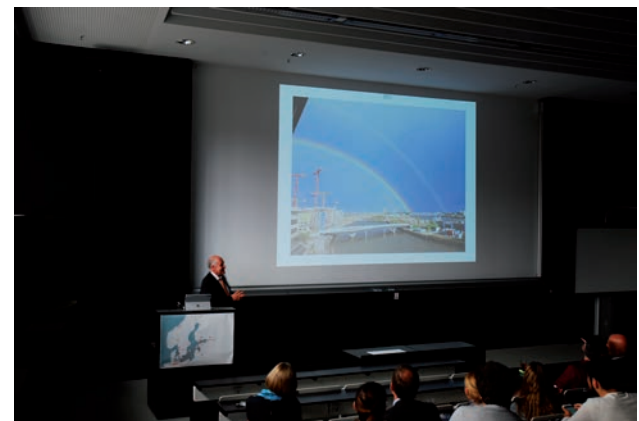














Information contacts

Prof. Dr.-Ing. Annette Bögle

Design and Analysis of Structures
Civil Engineering | Architectural Engineering
annette.boegle@hcu-hamburg.de

Emiliya Popova | M. Sc. Urban Design

Project Coordinator
BelInterBaltic | INNO-BSR | BISS
emiliya.popova@hcu-hamburg.de

For partner universities - check our website: www.hcu-hamburg.de/biss