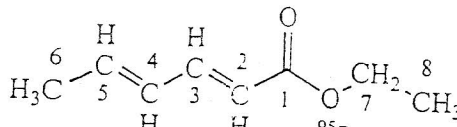
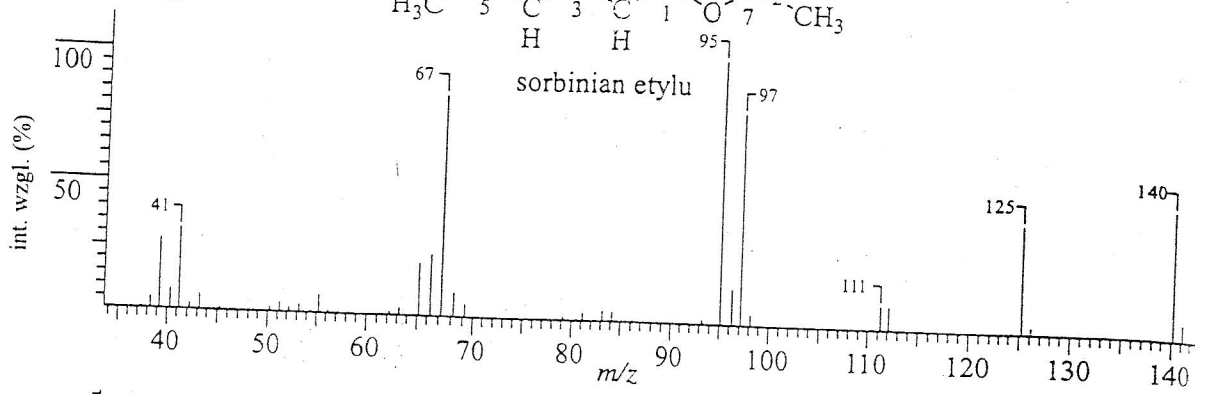


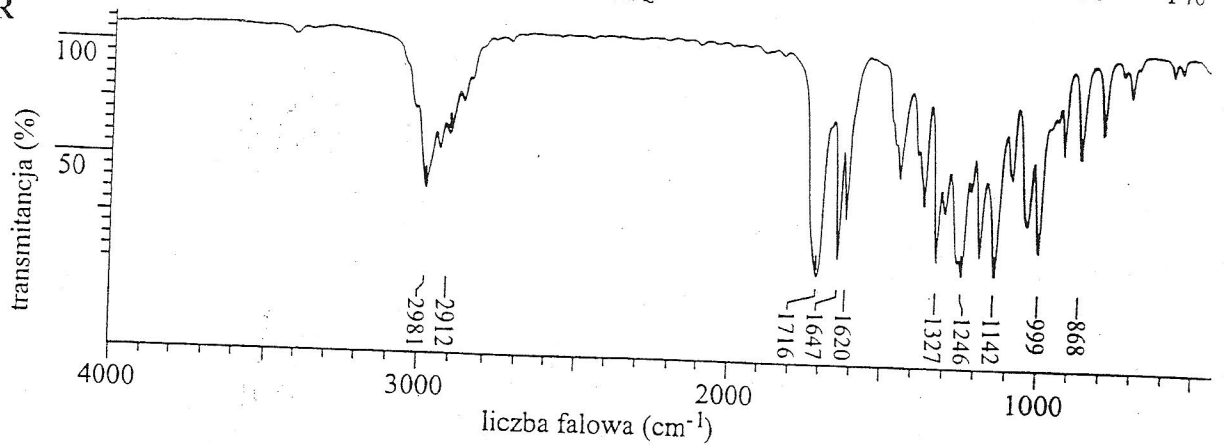
WIDMO MAS



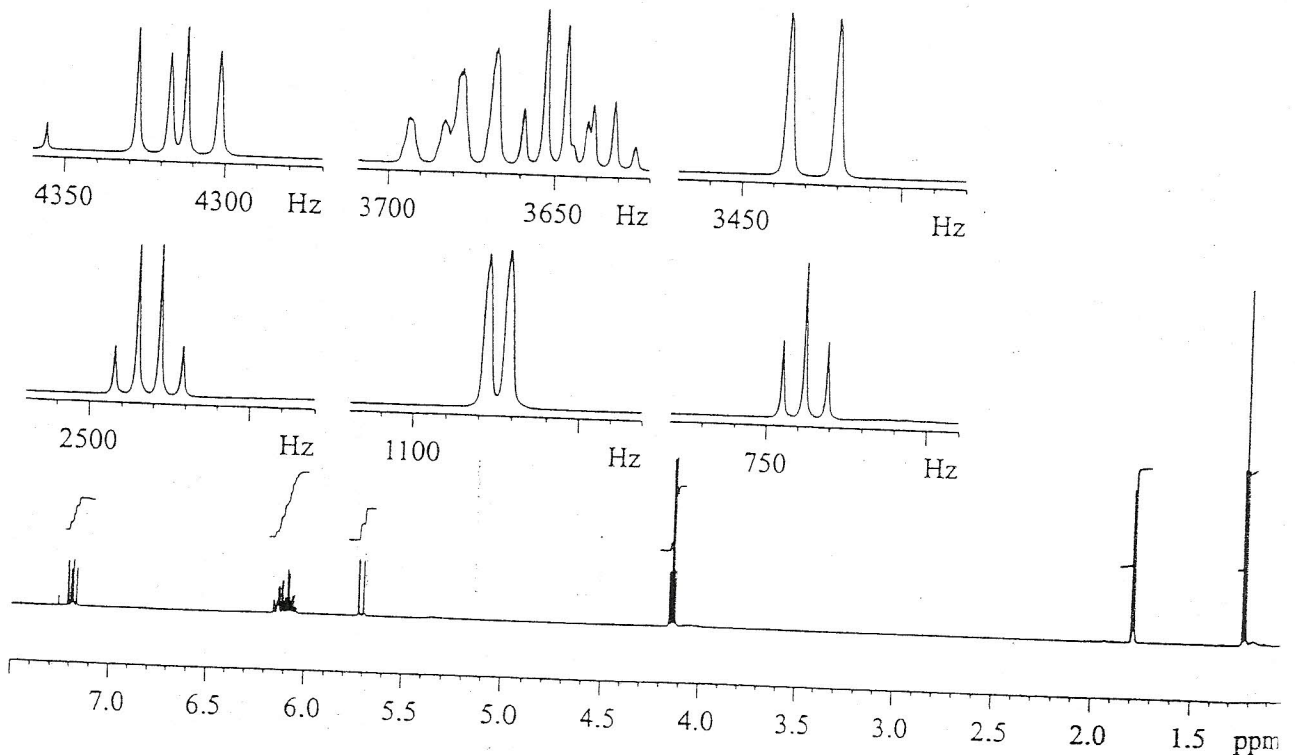
sorbinian etylu



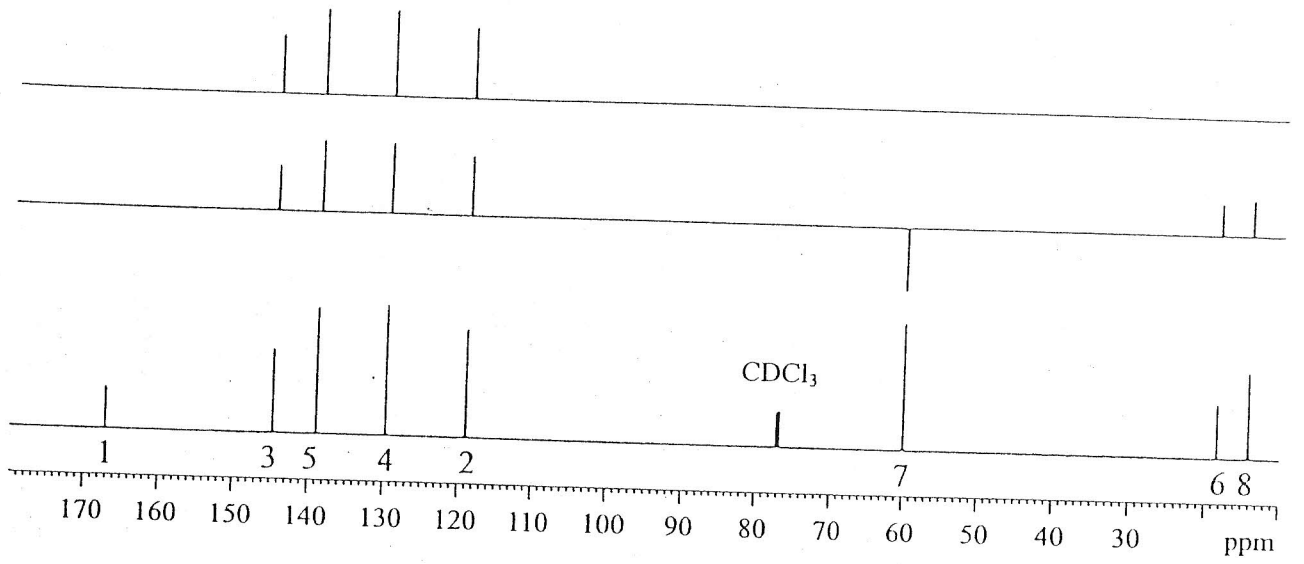
IR



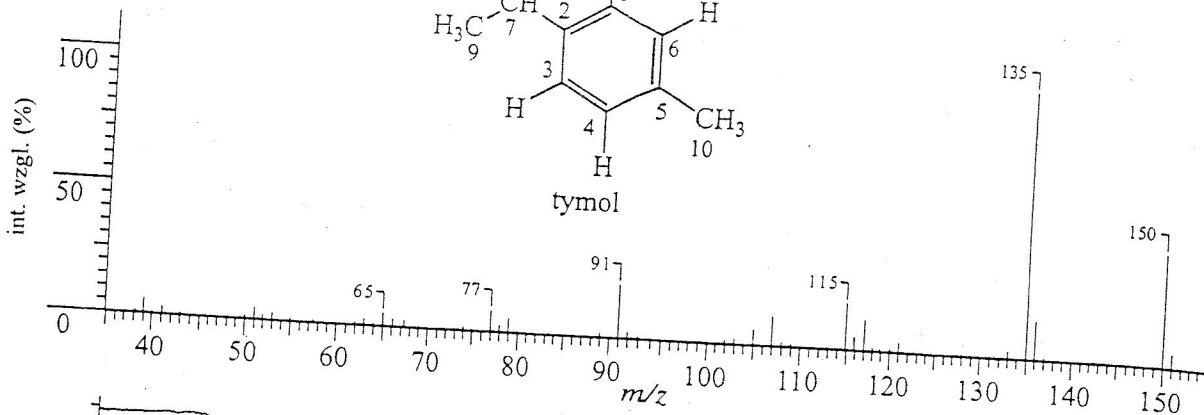
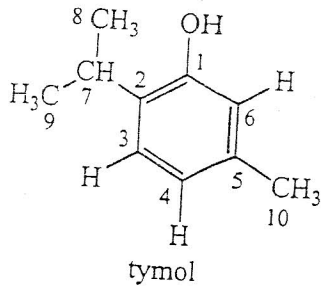
¹H NMR 600 MHz



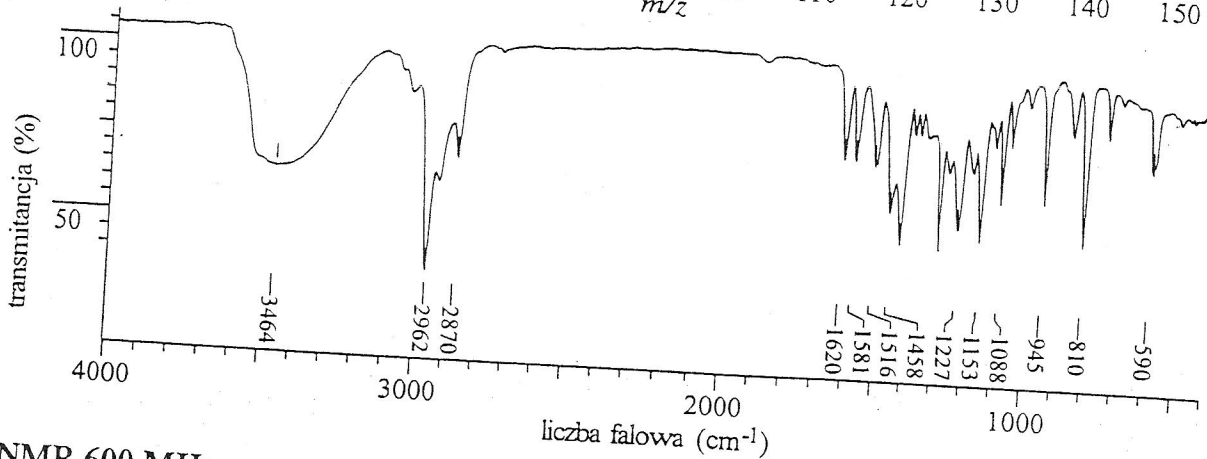
$^{13}\text{C}/\text{DEPT NMR 150.9 MHz}$ SV01



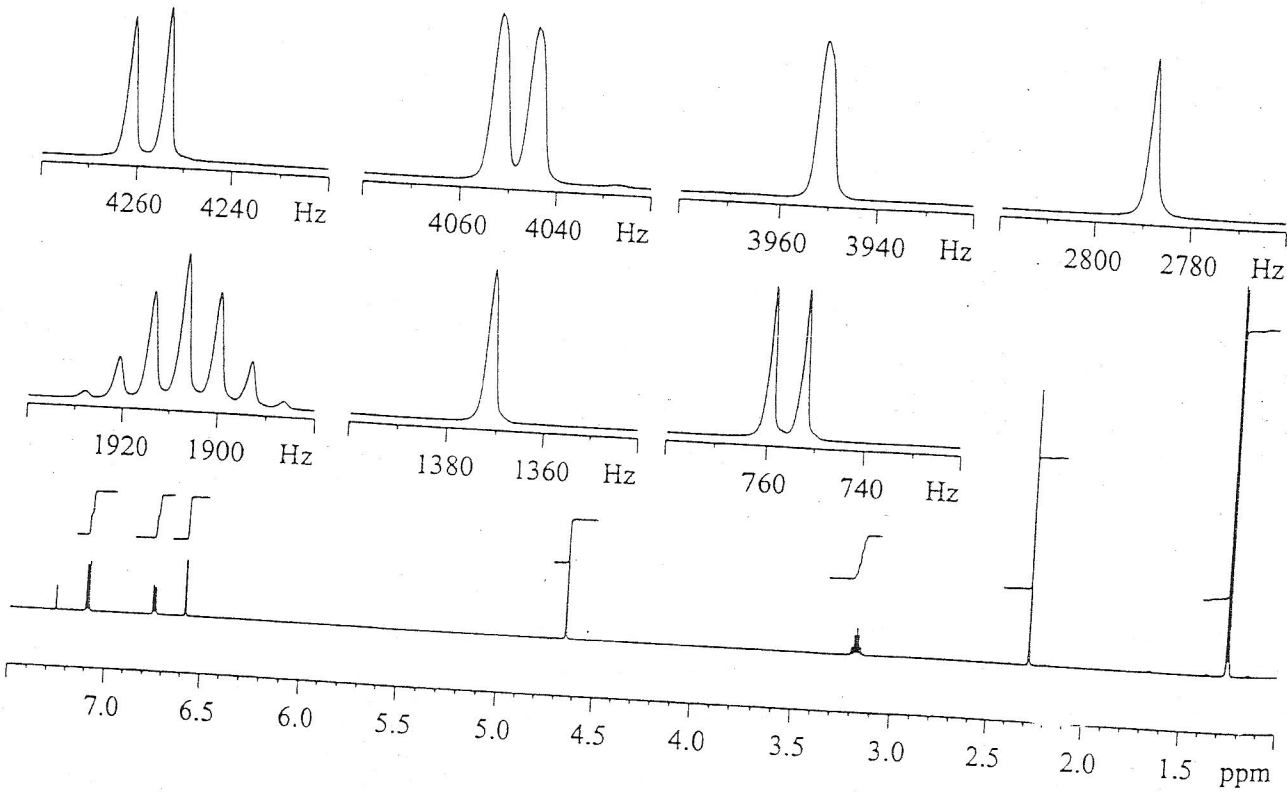
WIDMO MAS



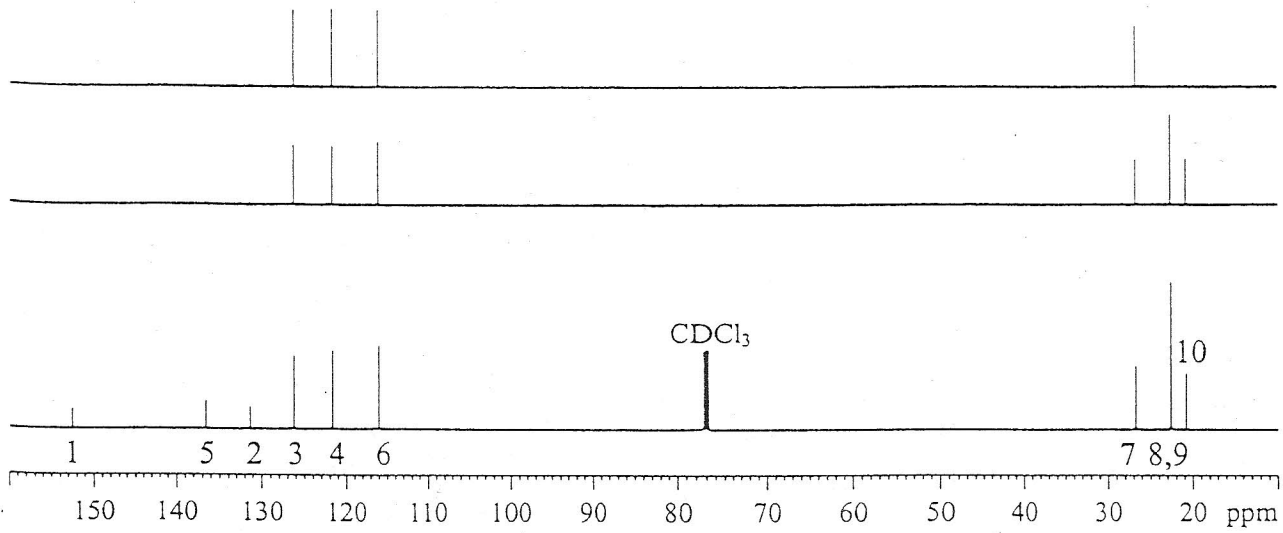
IR



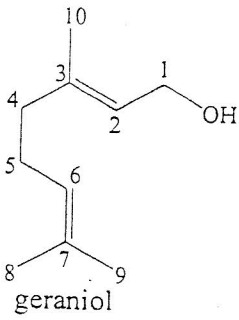
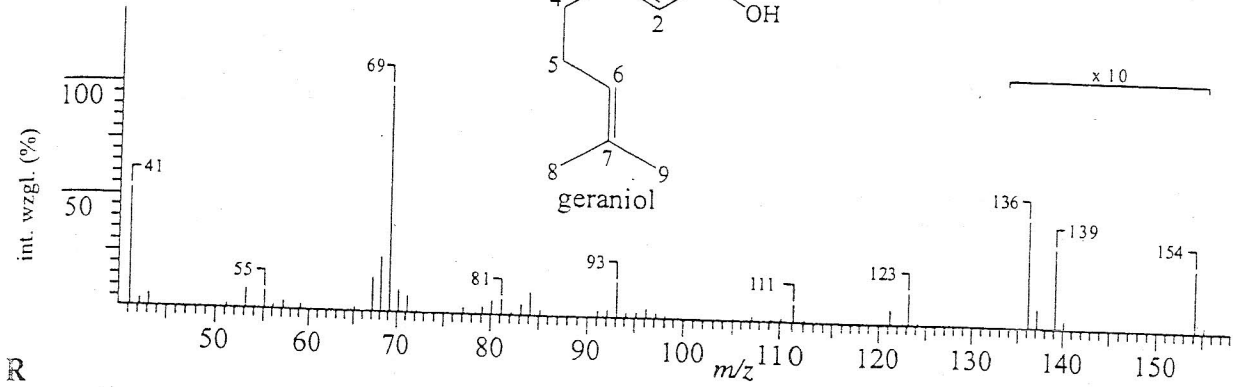
¹H NMR 600 MHz



$^{13}\text{C}/\text{DEPT NMR } 150.9 \text{ MHz}$

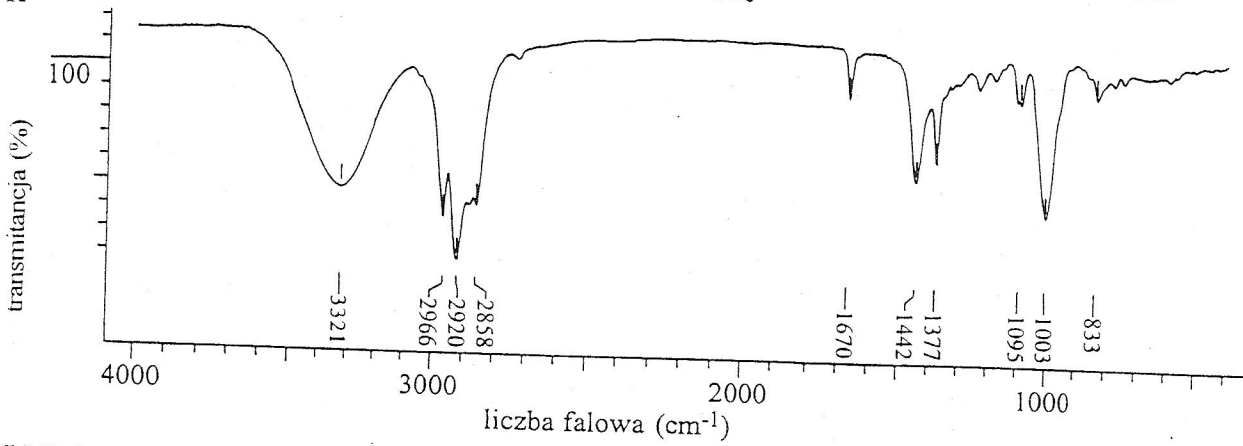


WIDMO MAS

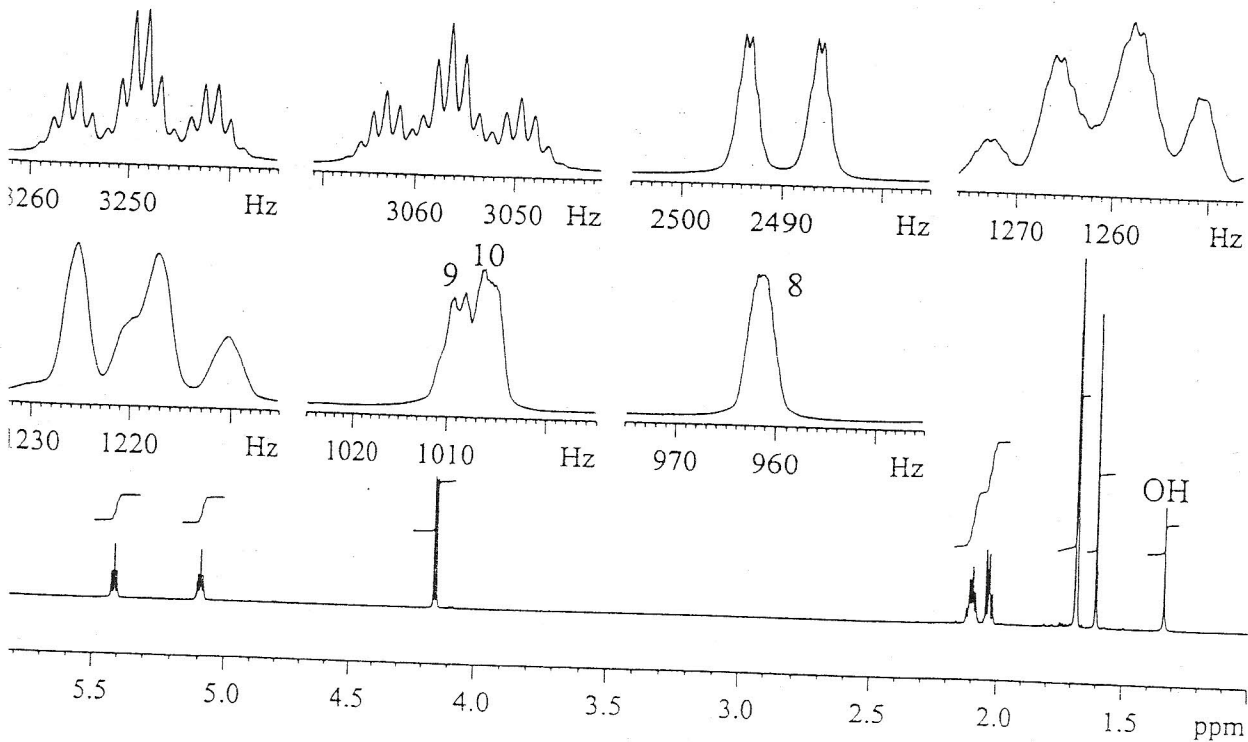


SV03

R

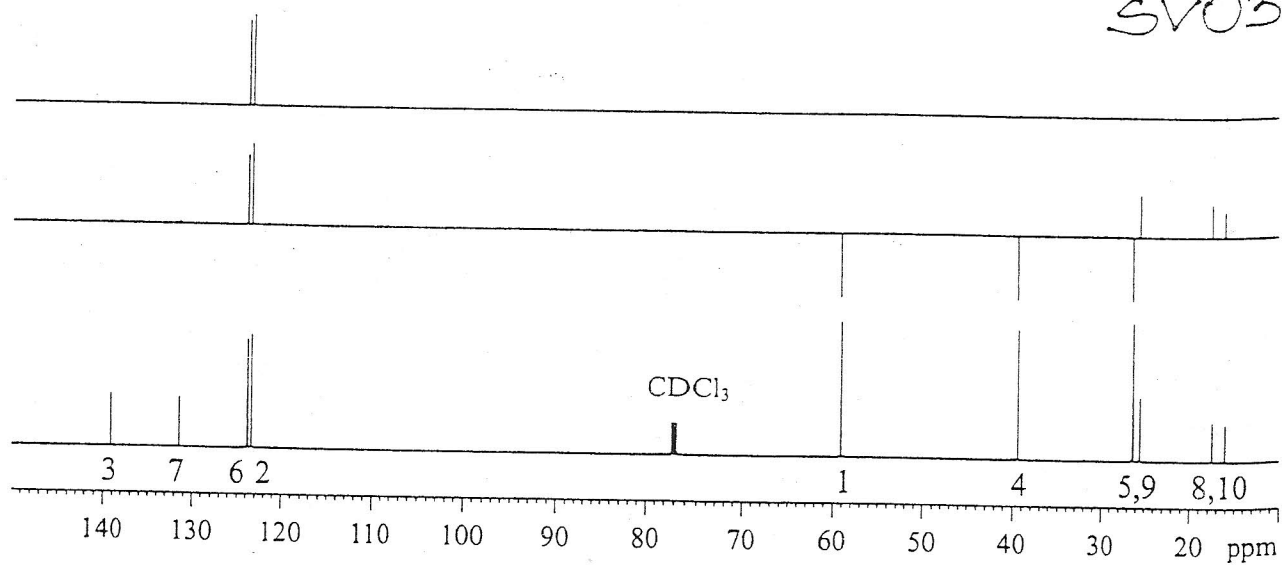


1 NMR 600 MHz



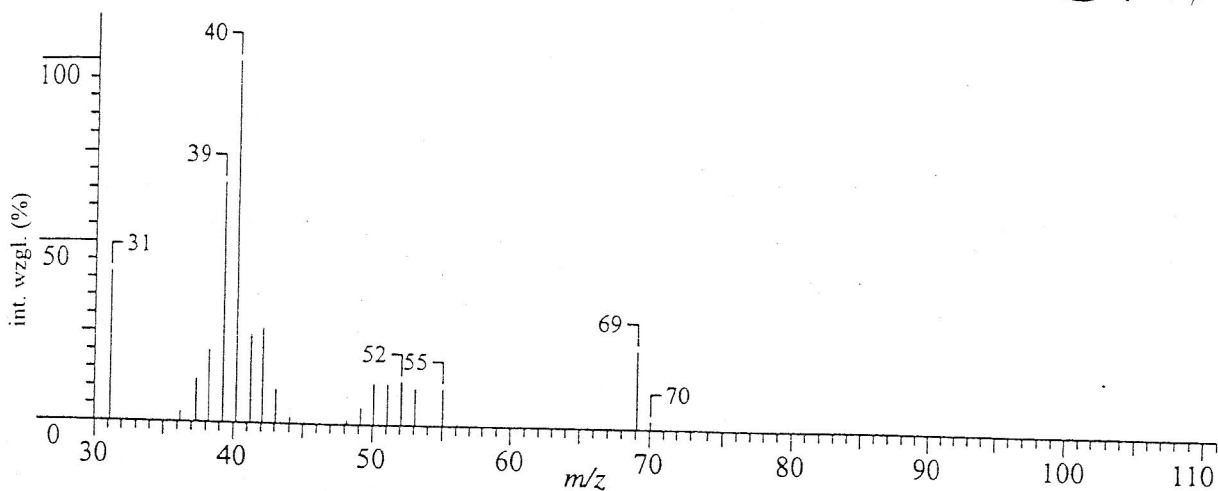
$^{13}\text{C}/\text{DEPT NMR 150.9 MHz}$

SV03

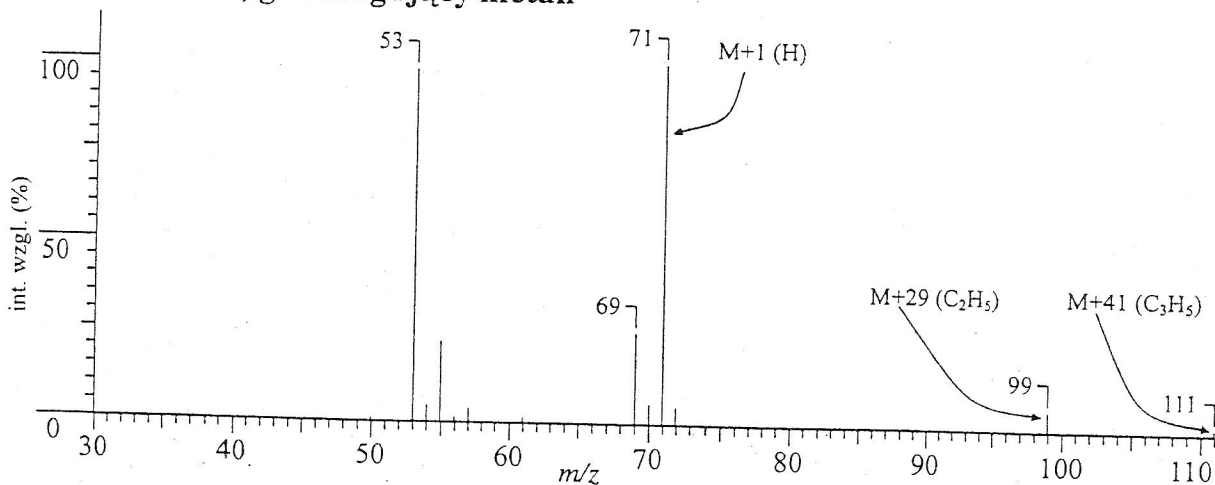


WIDMO MAS EI

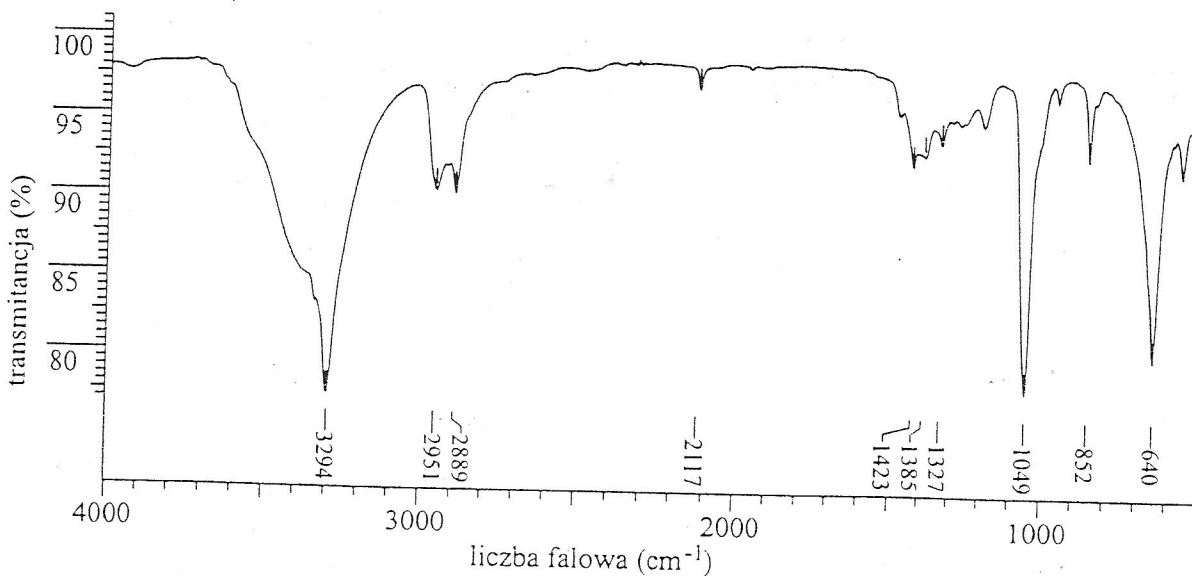
SVIG



WIDMO MAS CI, gaz reagujący metan

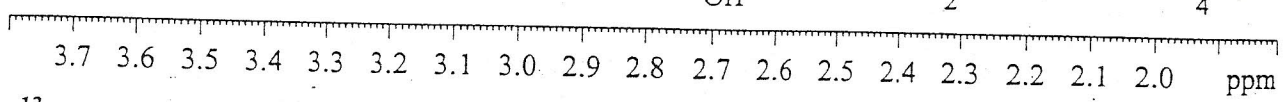
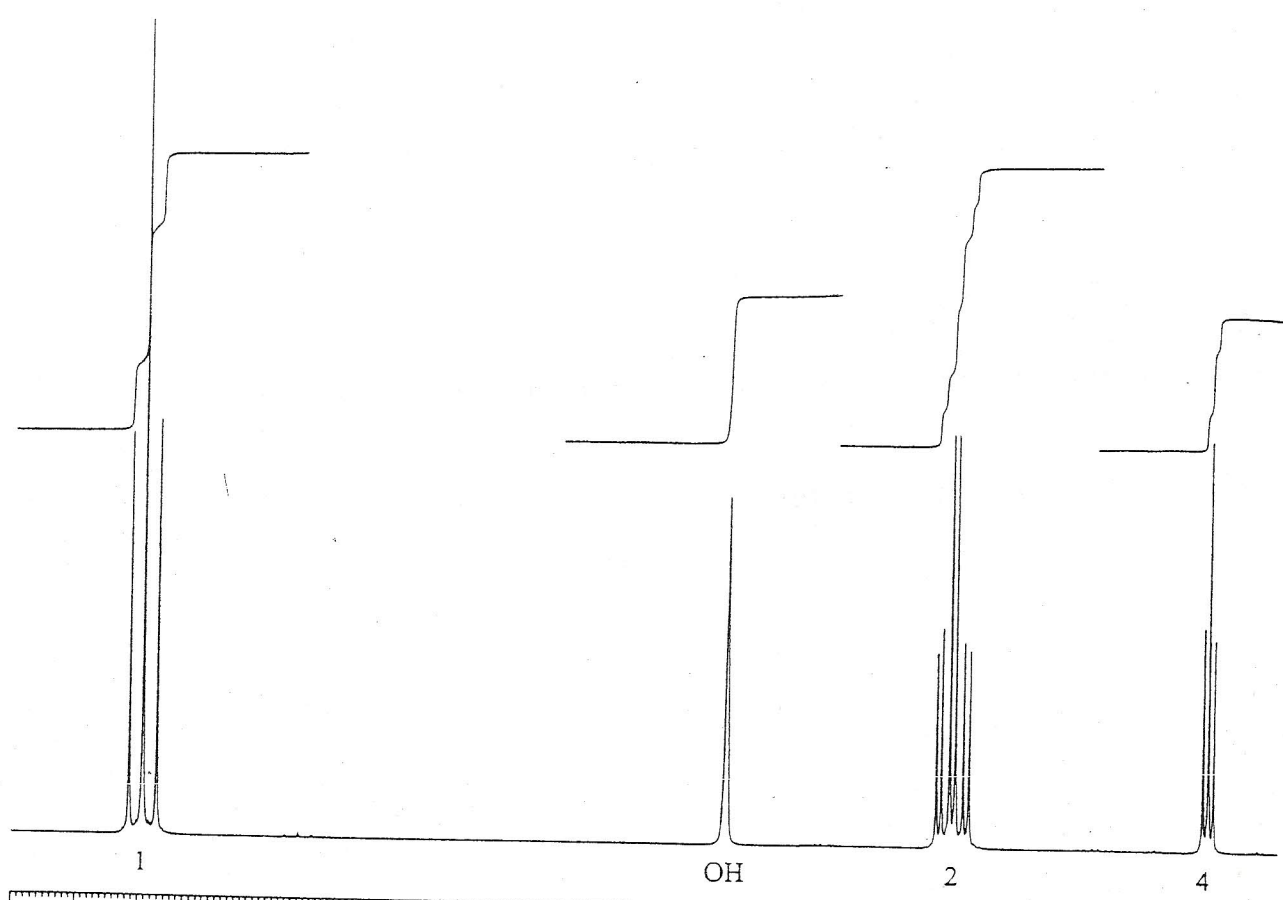


IR

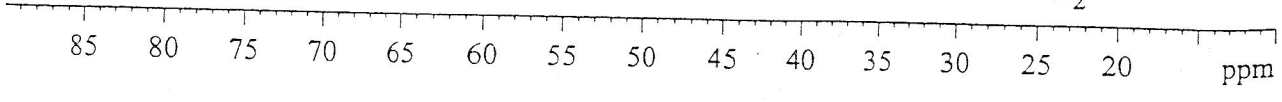
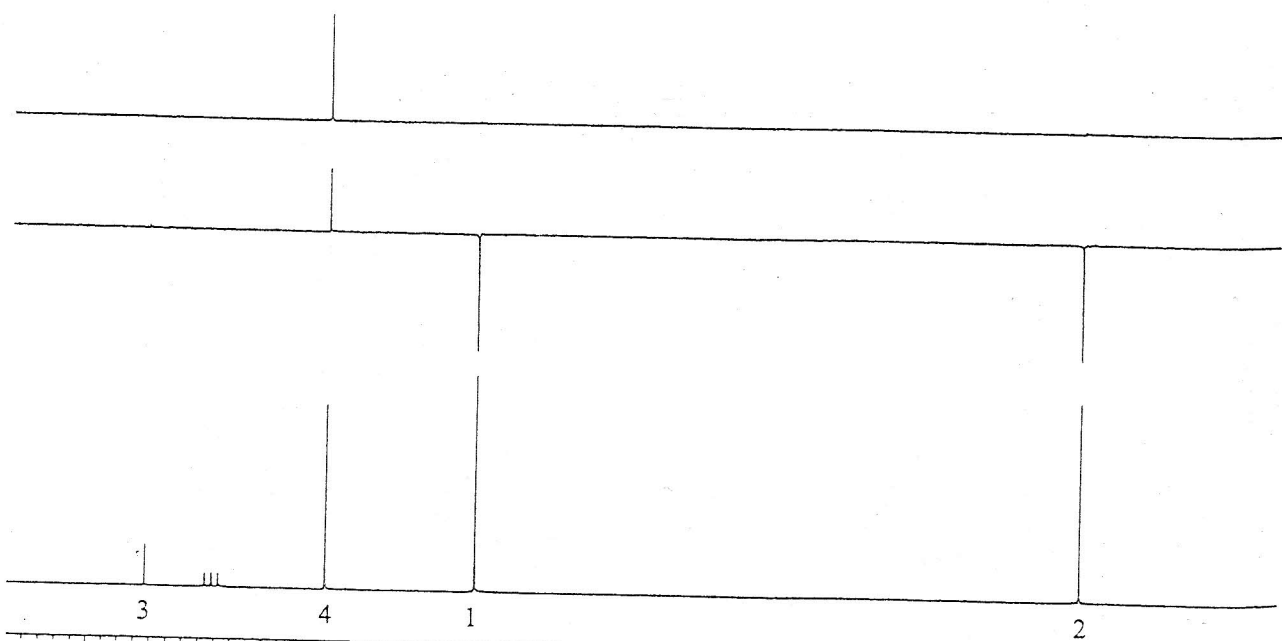


^1H NMR 600 MHz

SV16



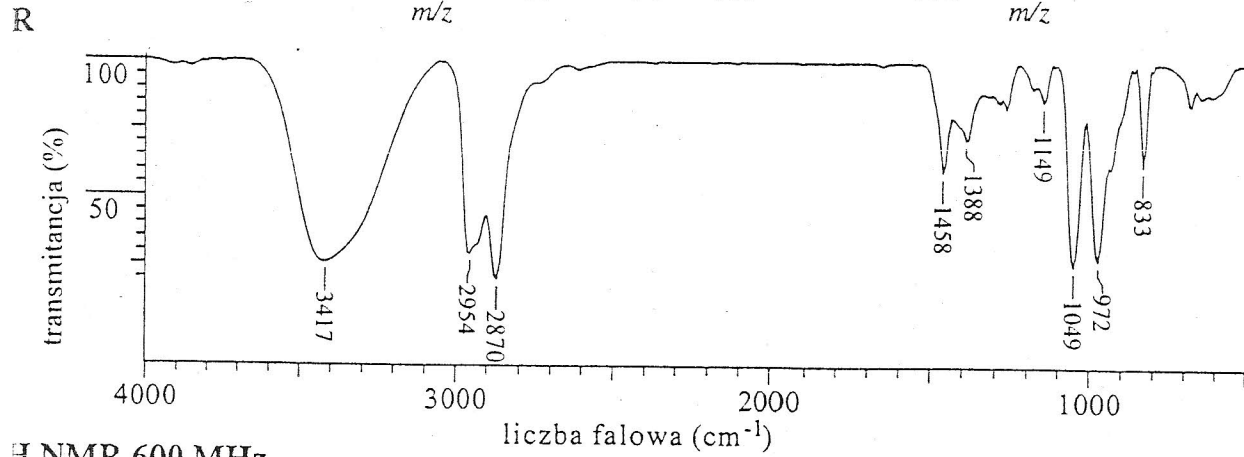
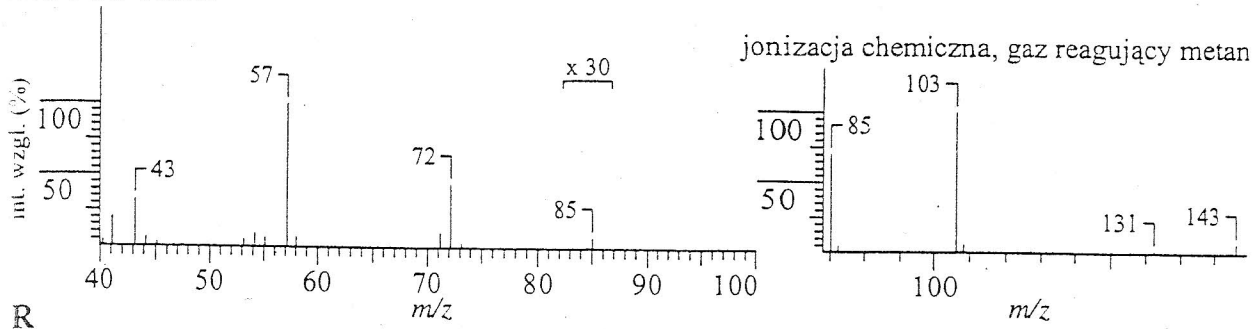
$^{13}\text{C}/\text{DEPT}$ NMR 150.9 MHz



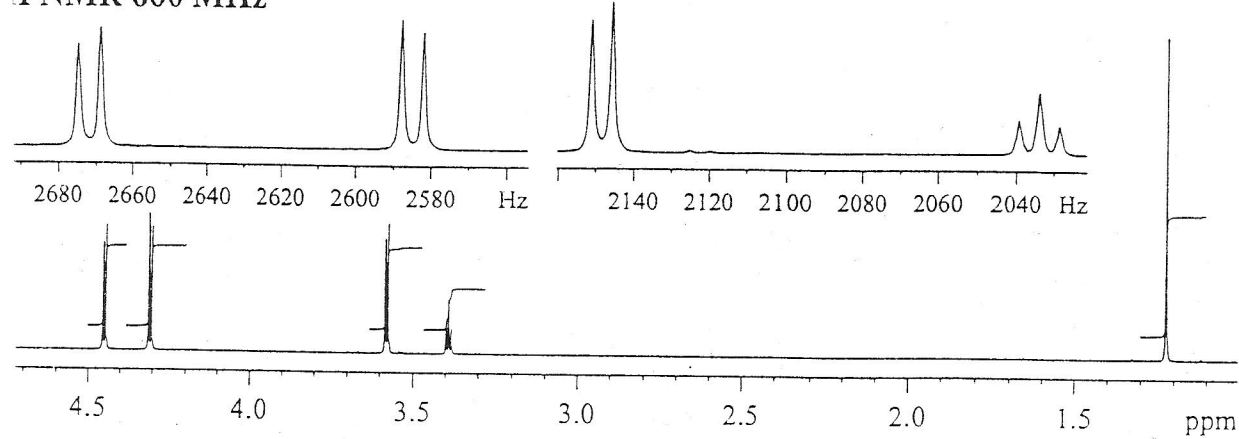
VIDMO MAS

SV04

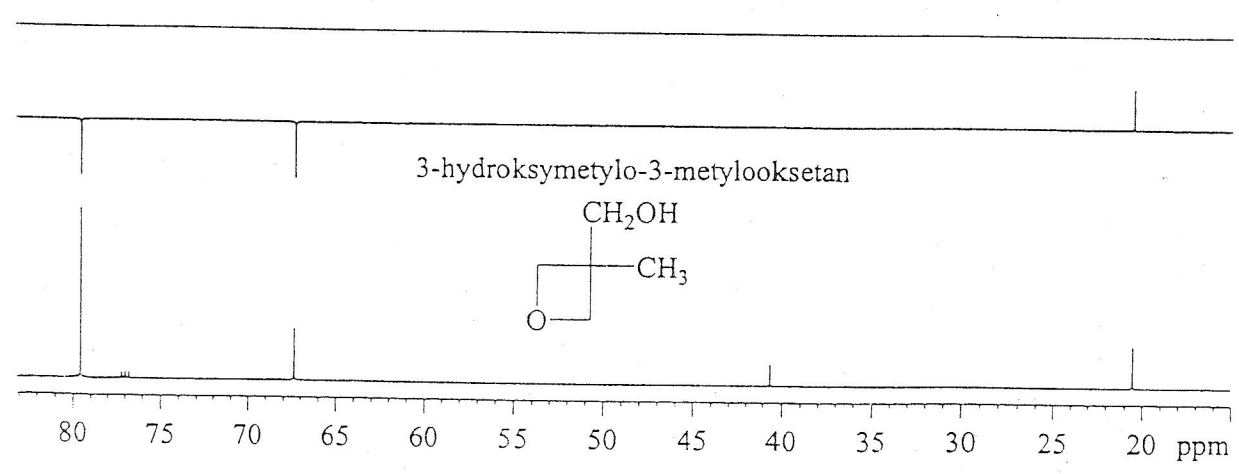
SV04



¹H NMR 600 MHz



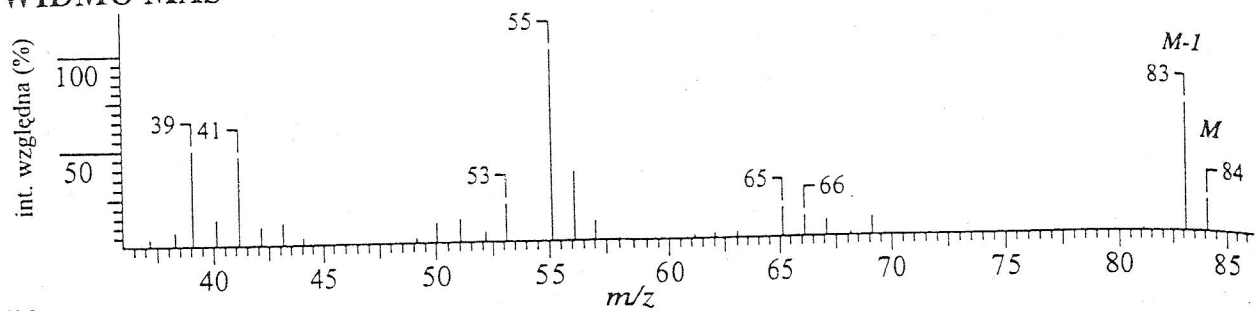
¹³C/DEPT NMR 150.9 MHz



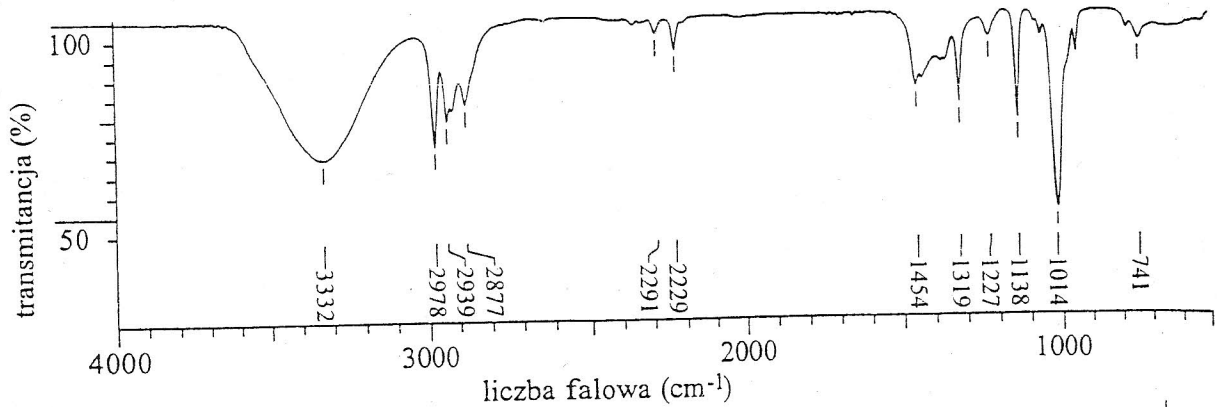
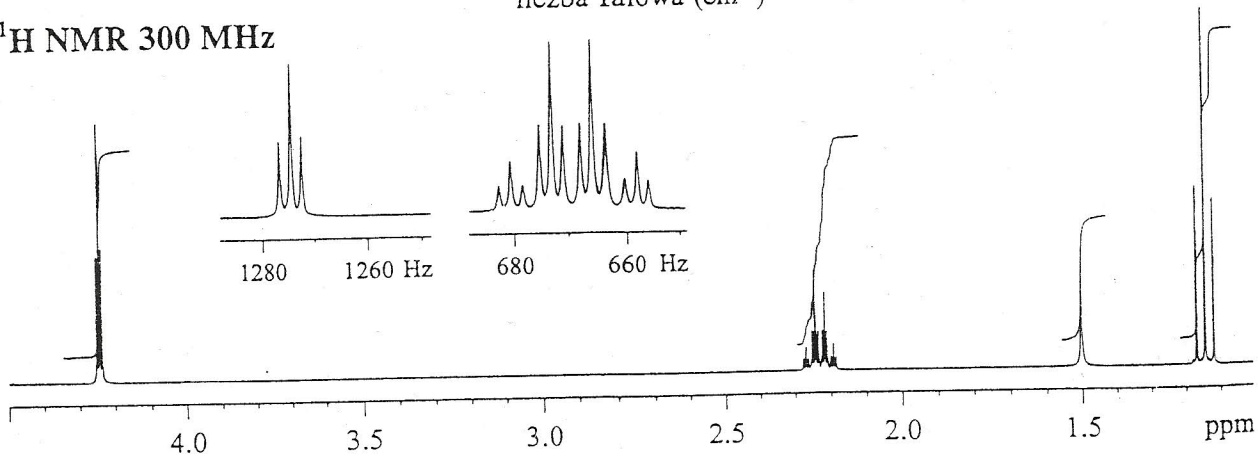
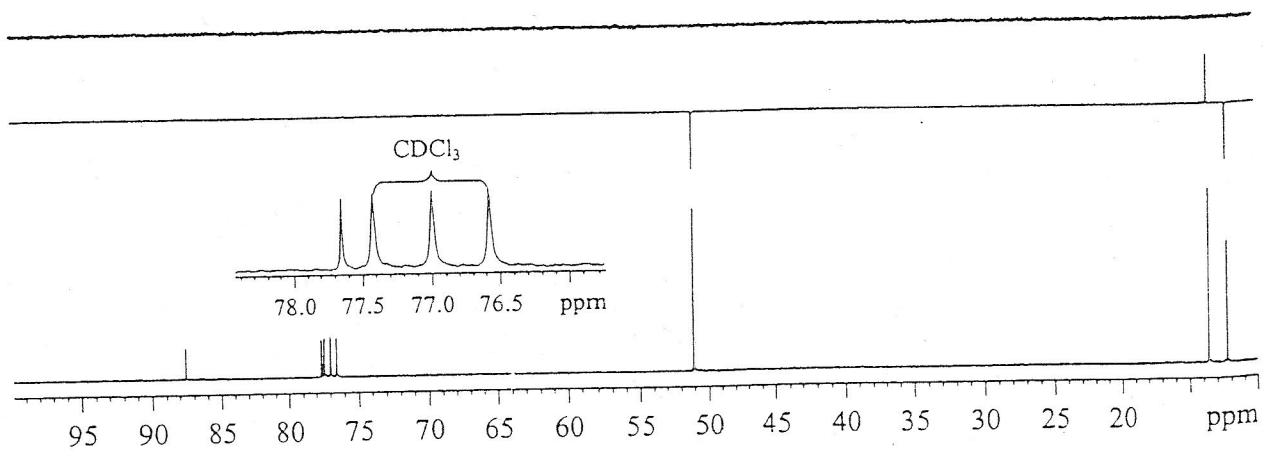
SV05

SV05

WIDMO MAS



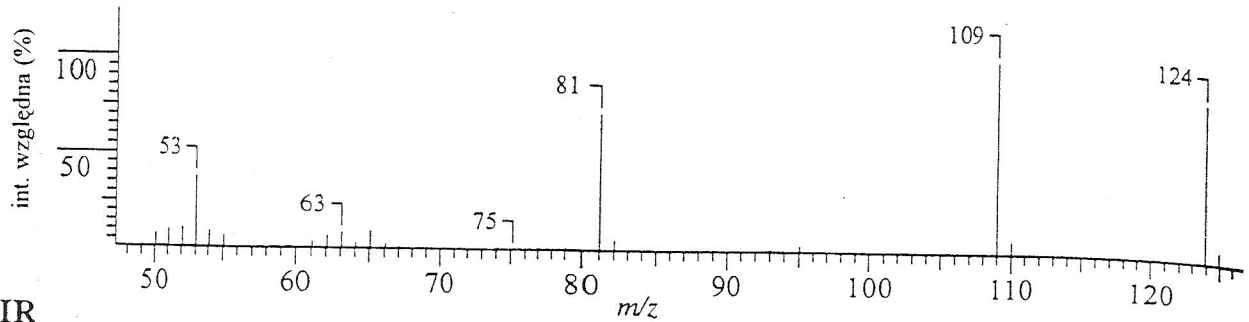
IR

 ^1H NMR 300 MHz $^{13}\text{C}/\text{DEPT}$ NMR 75.5 MHz

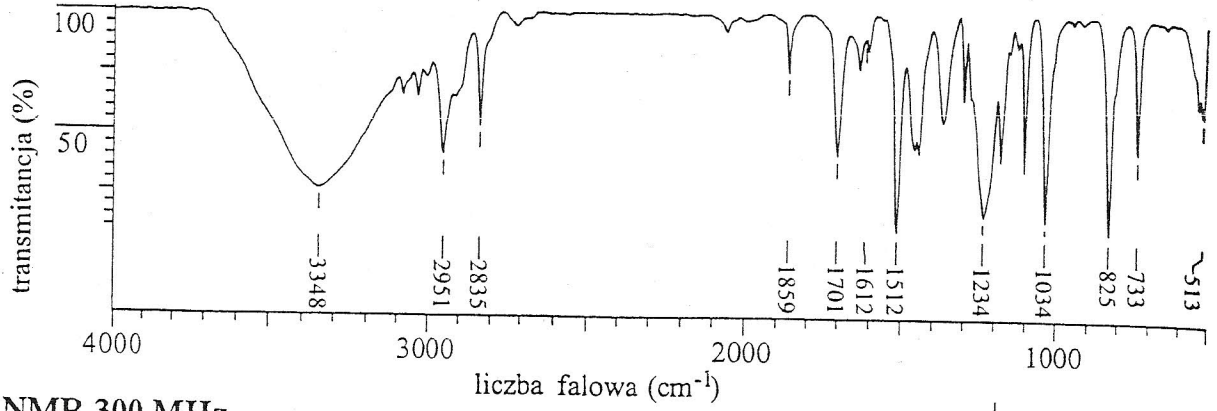
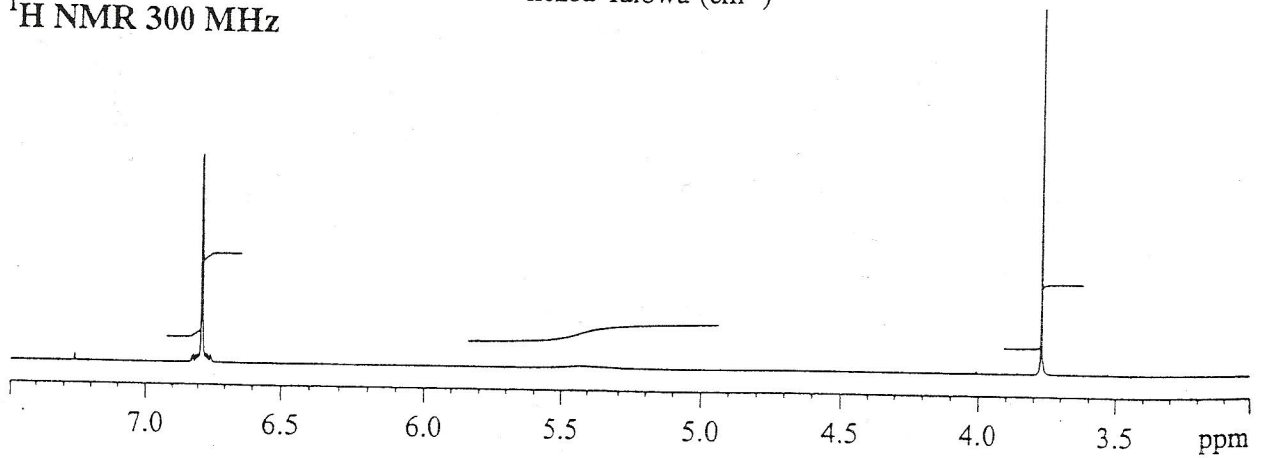
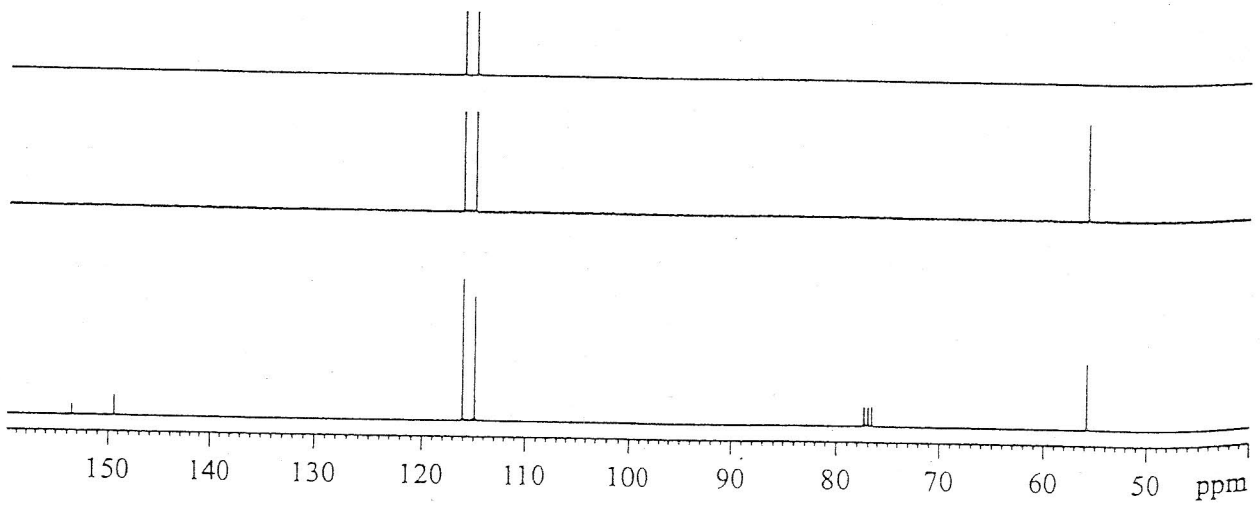
SV 06

SV 06

WIDMO MAS



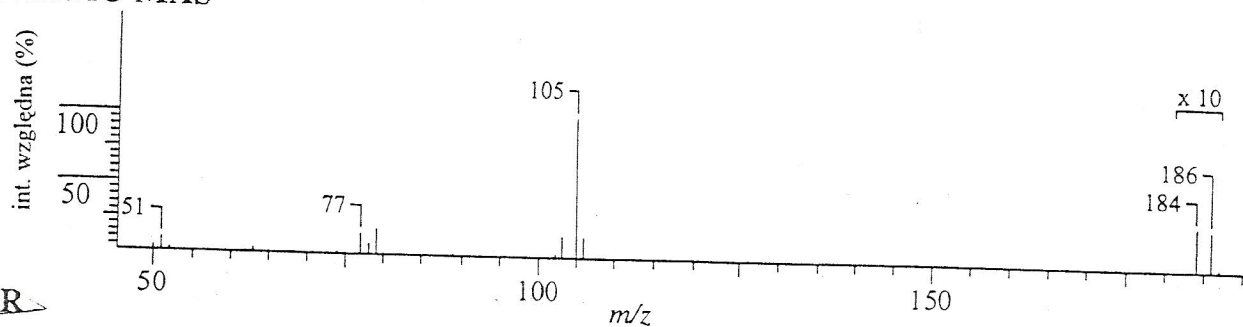
IR

 ^1H NMR 300 MHz $^{13}\text{C}/\text{DEPT}$ NMR 75.5 MHz

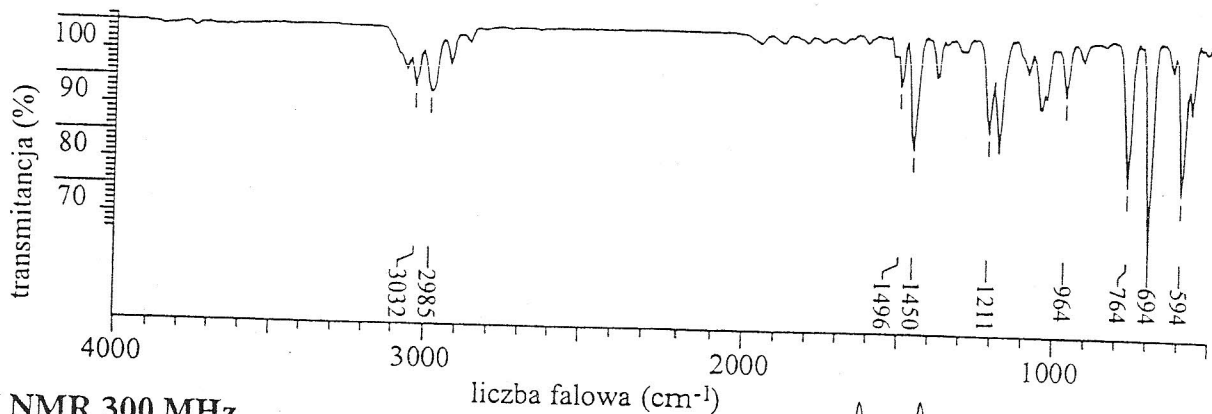
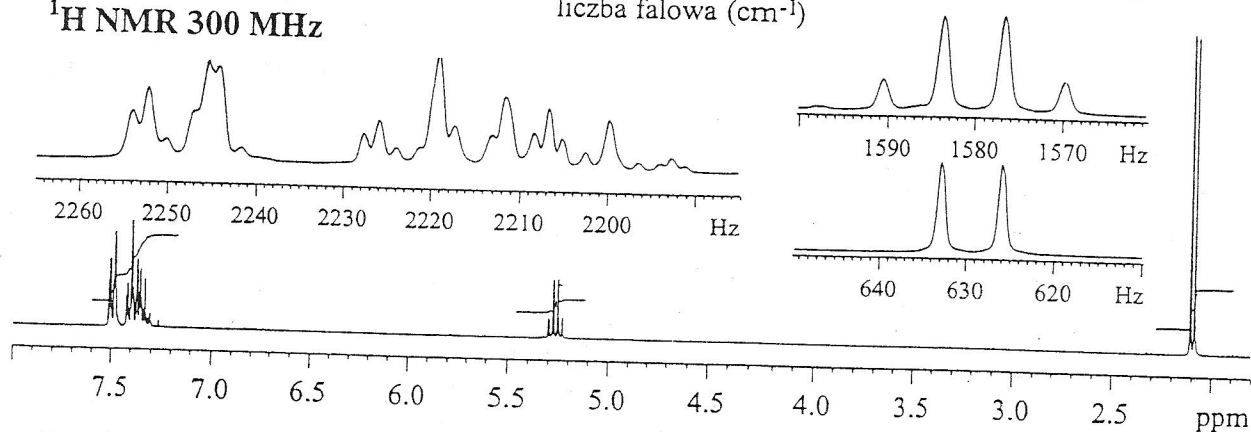
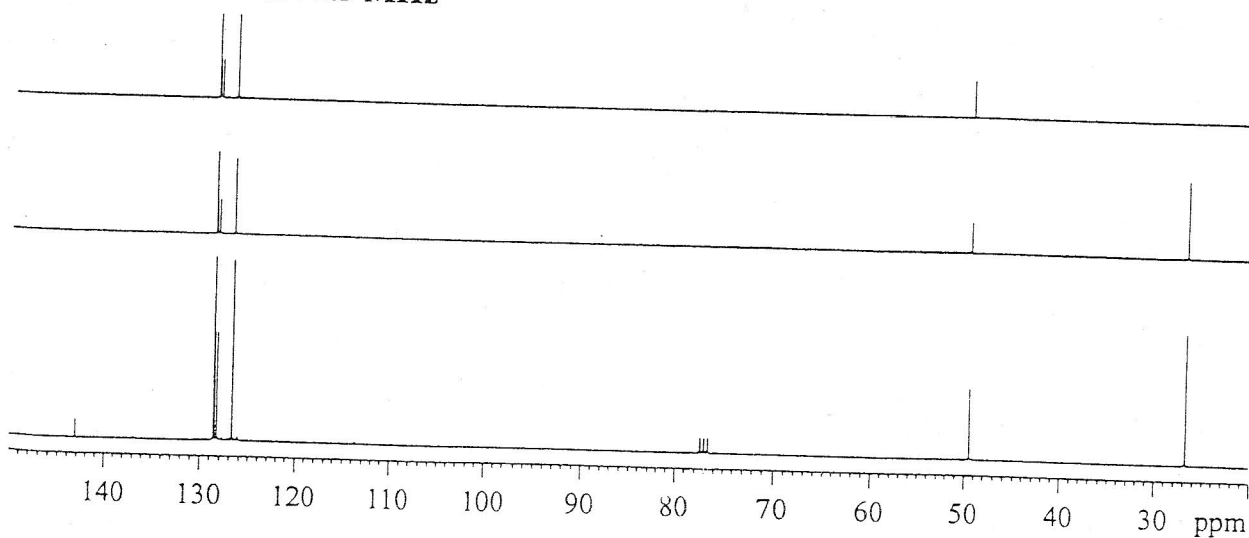
SV07

SVO7

WIDMO MAS



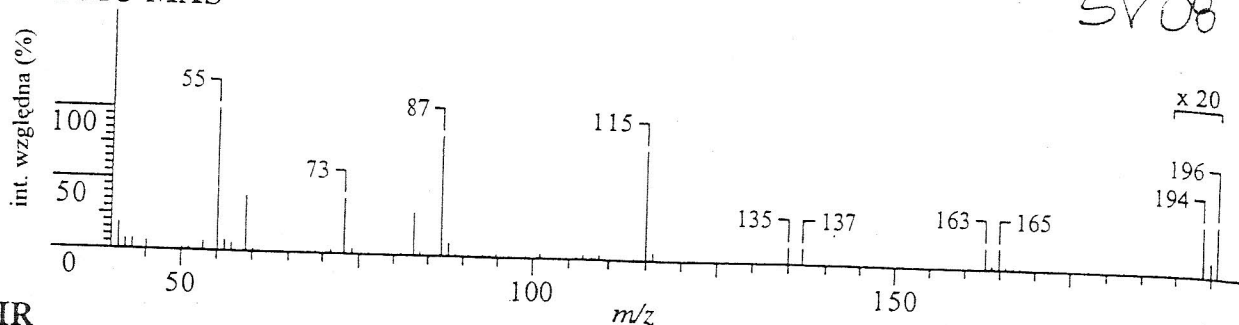
IR

 ^1H NMR 300 MHzliczba falowa (cm^{-1}) $^{13}\text{C}/\text{DEPT}$ NMR 75.5 MHz

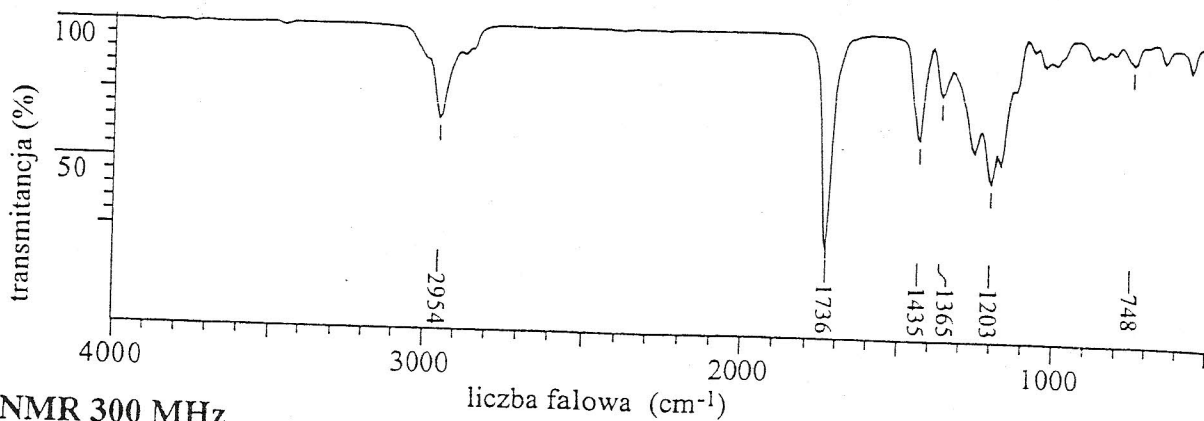
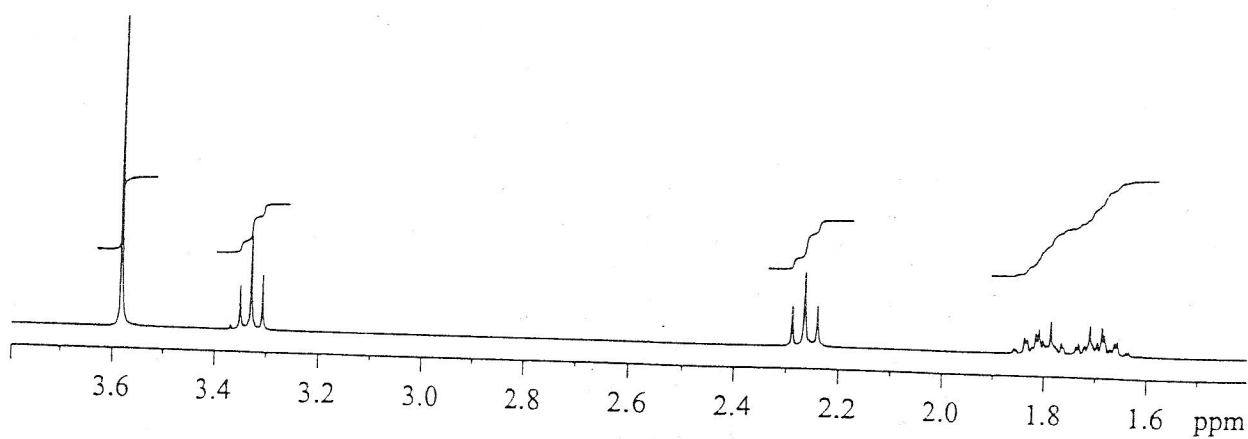
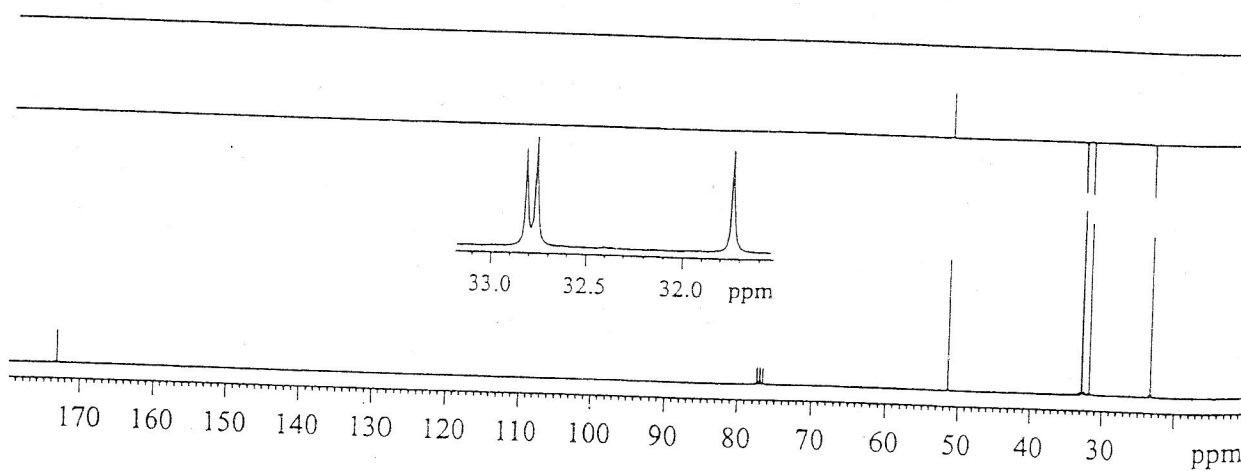
SV08

SV08

WIDMO MAS



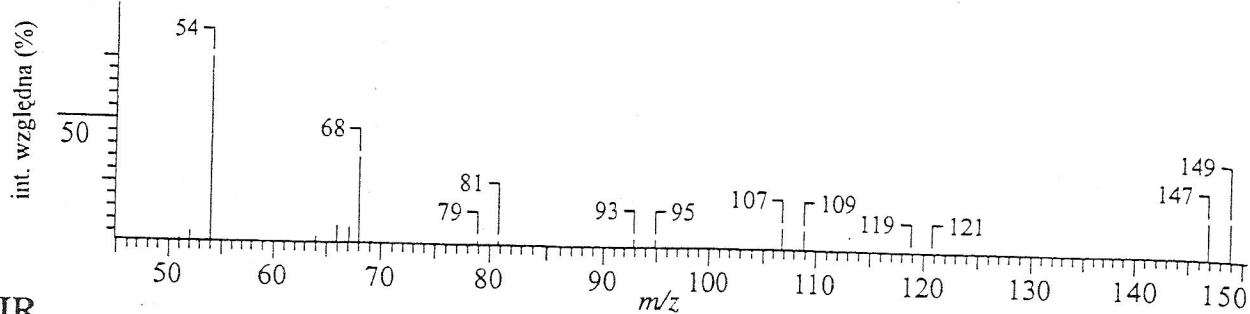
IR

 ^1H NMR 300 MHz $^{13}\text{C}/\text{DEPT}$ NMR 75.5 MHz

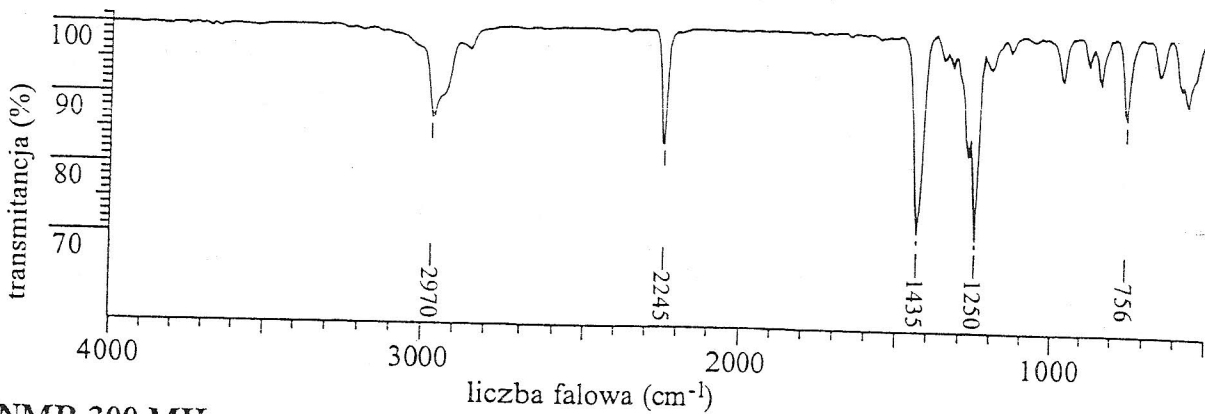
SV09

SV09

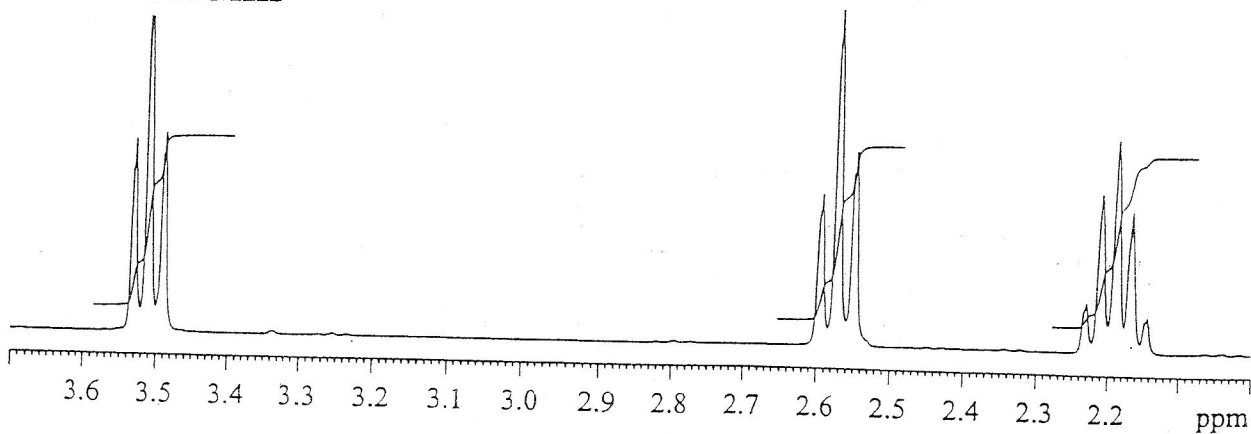
WIDMO MAS



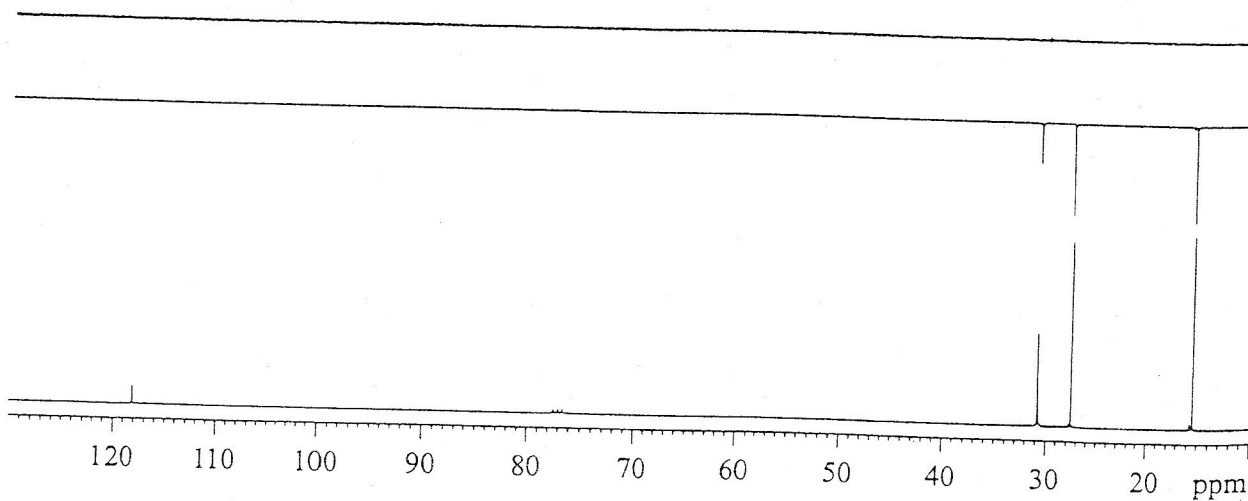
IR



¹H NMR 300 MHz



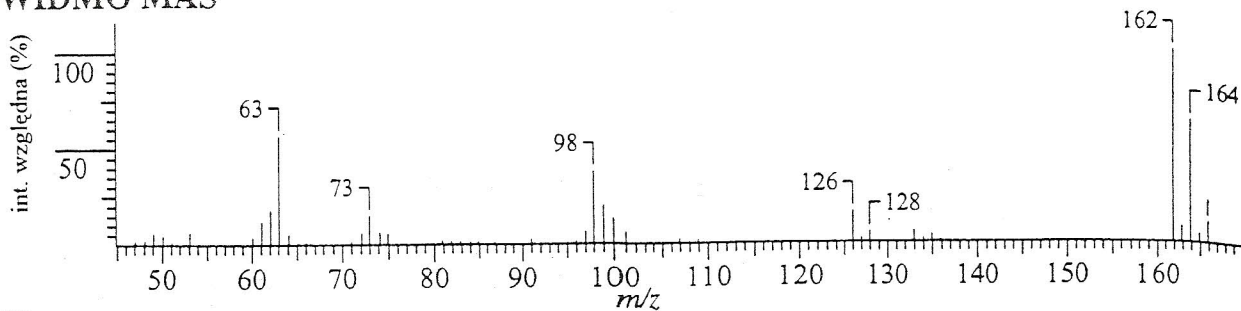
¹³C/DEPT NMR 75.5 MHz



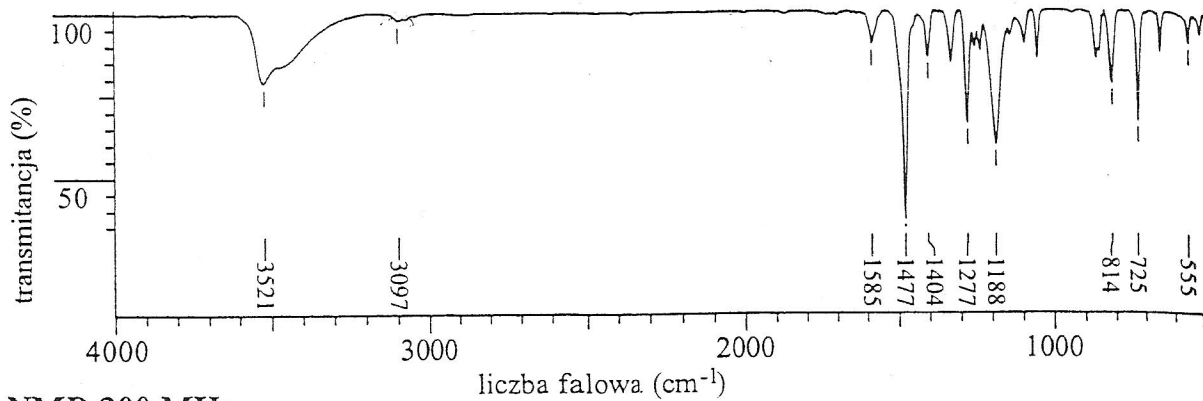
SV10

SV10

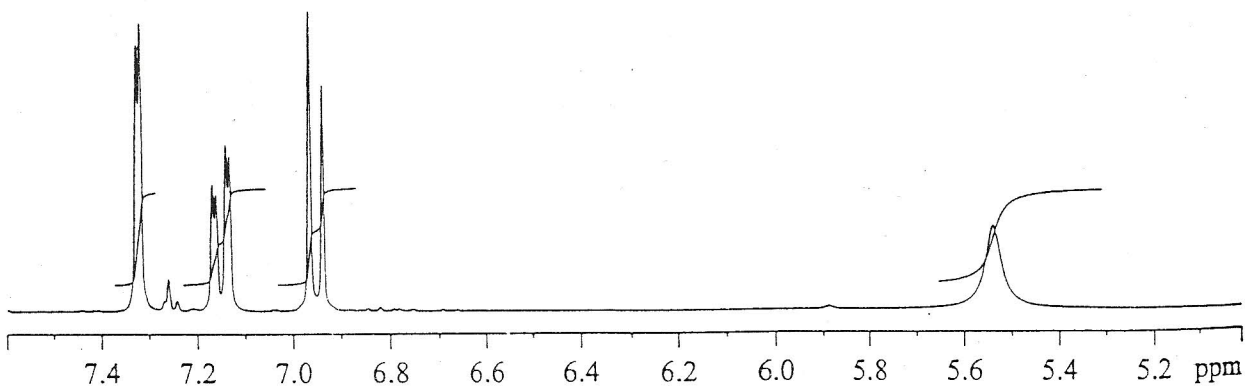
WIDMO MAS



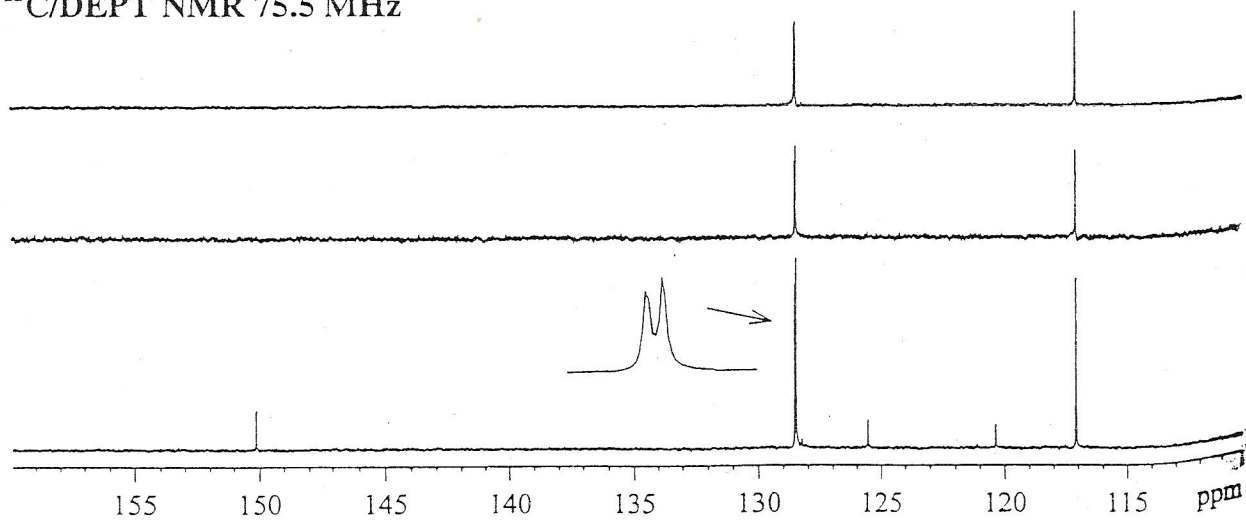
IR



¹H NMR 300 MHz



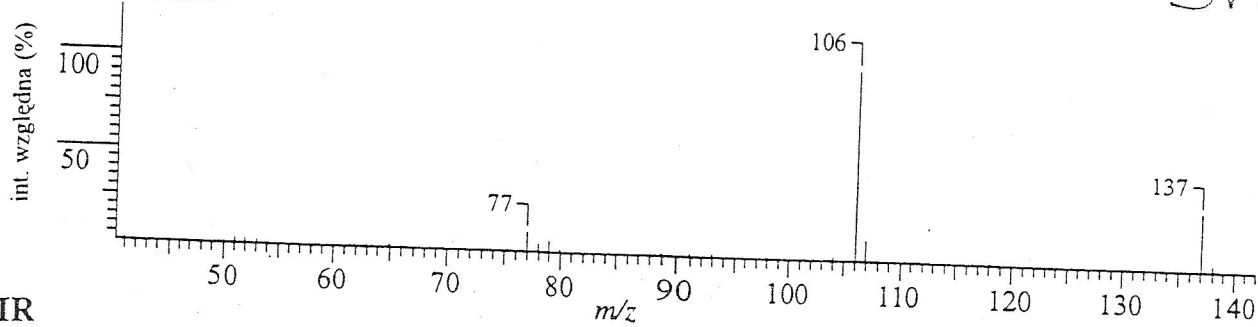
¹³C/DEPT NMR 75.5 MHz



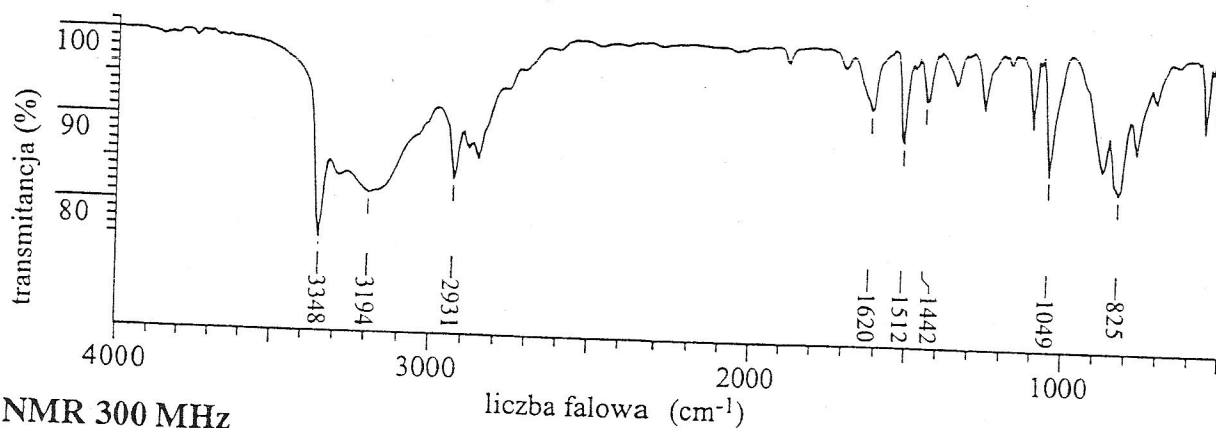
SV11

SV11

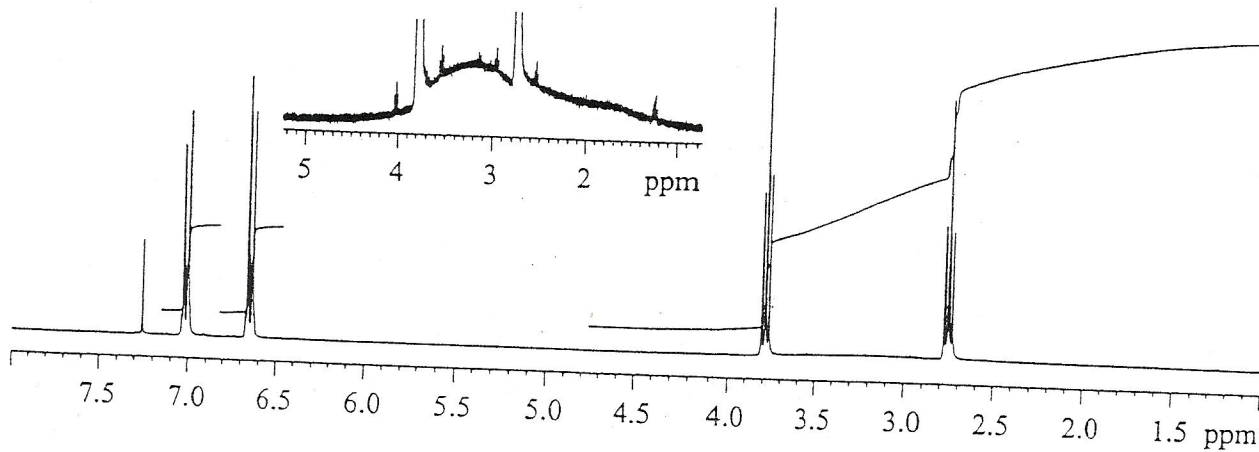
WIDMO MAS



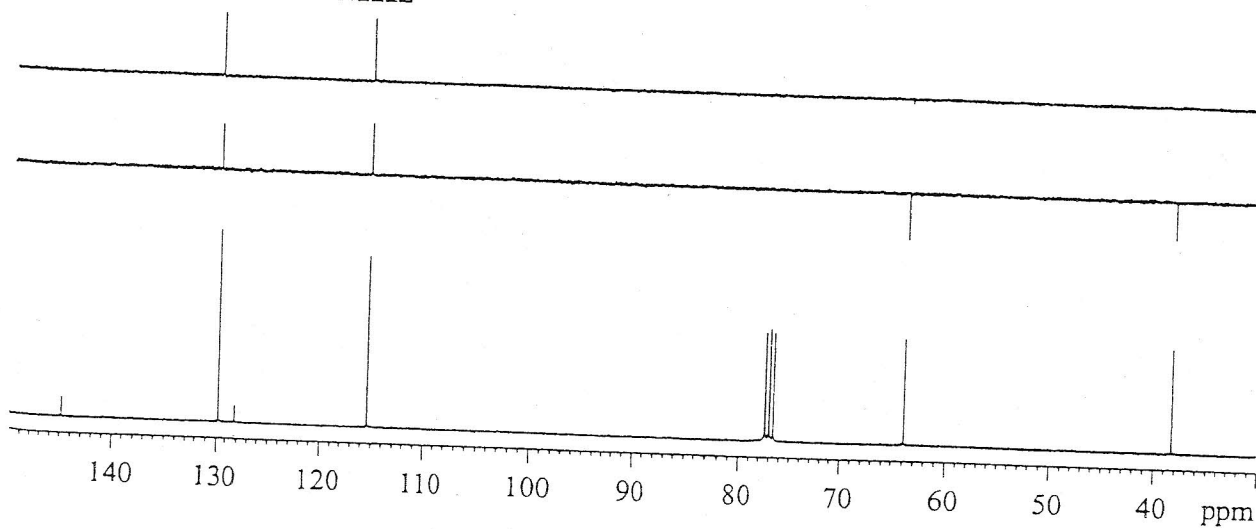
IR



¹H NMR 300 MHz



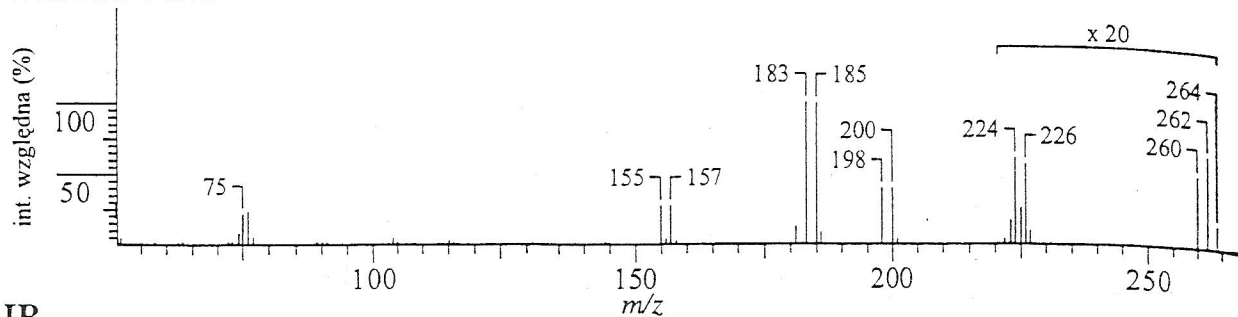
¹³C/DEPT NMR 75.5 MHz



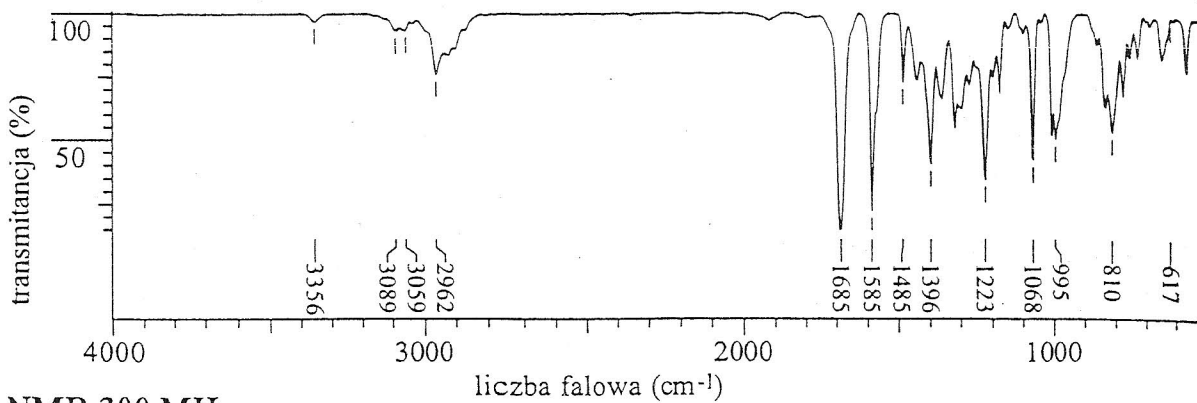
WIDMO MAS

SV12

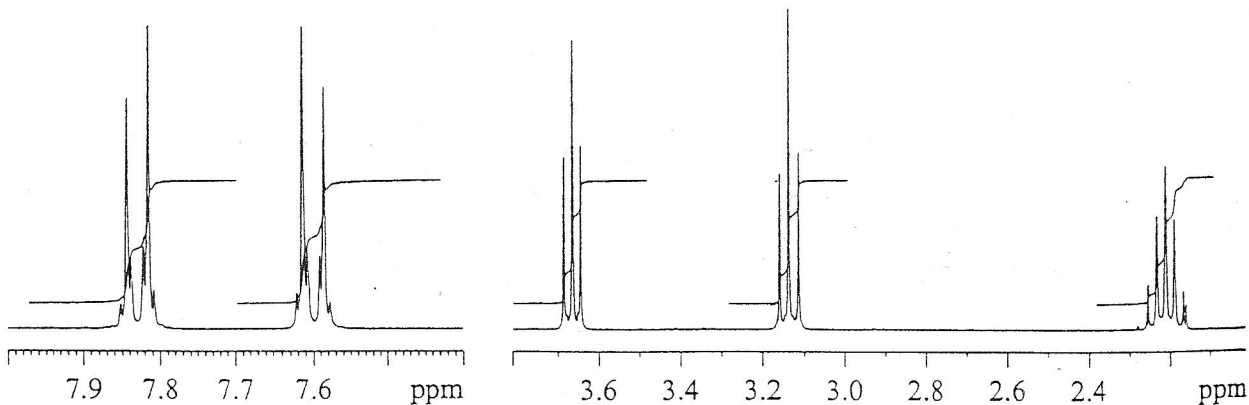
SV12



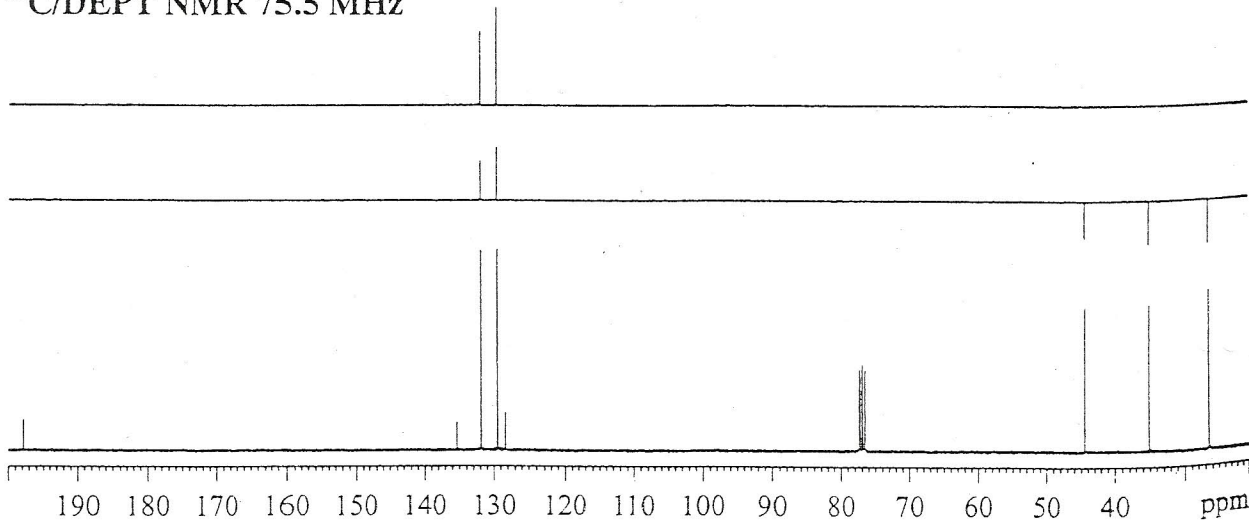
IR



1H NMR 300 MHz



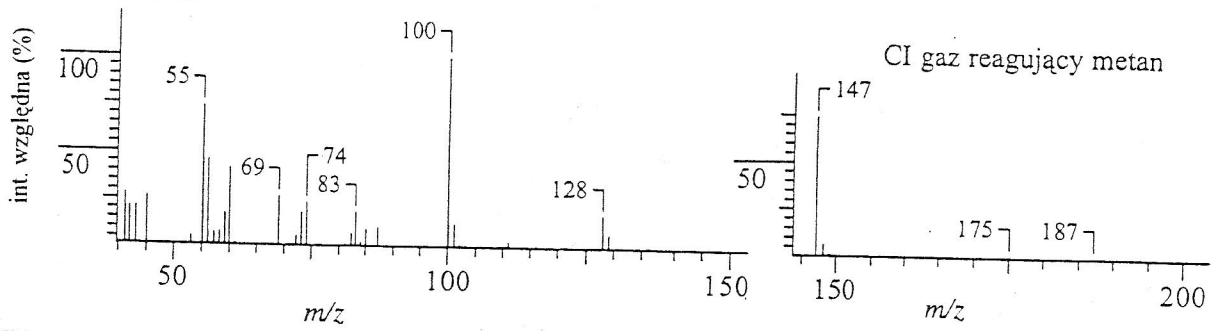
$^{13}C/DEPT$ NMR 75.5 MHz



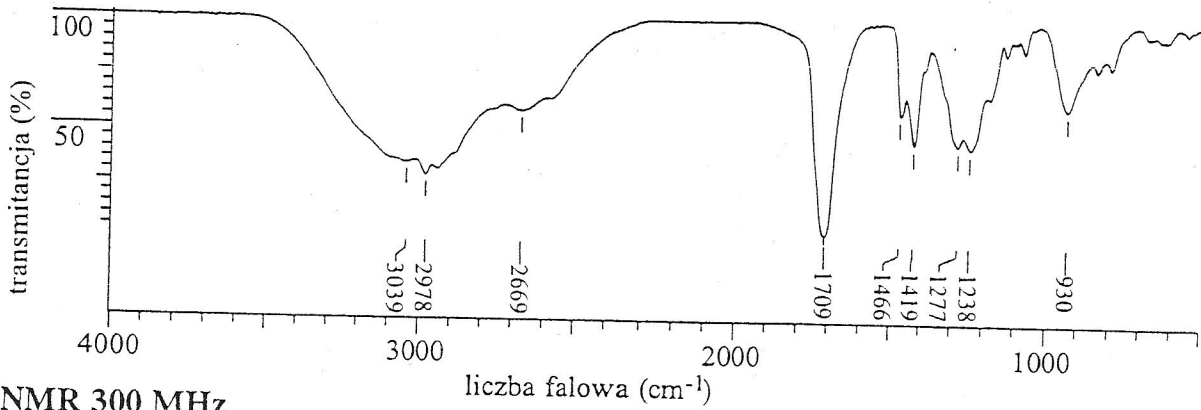
SV13

SV13

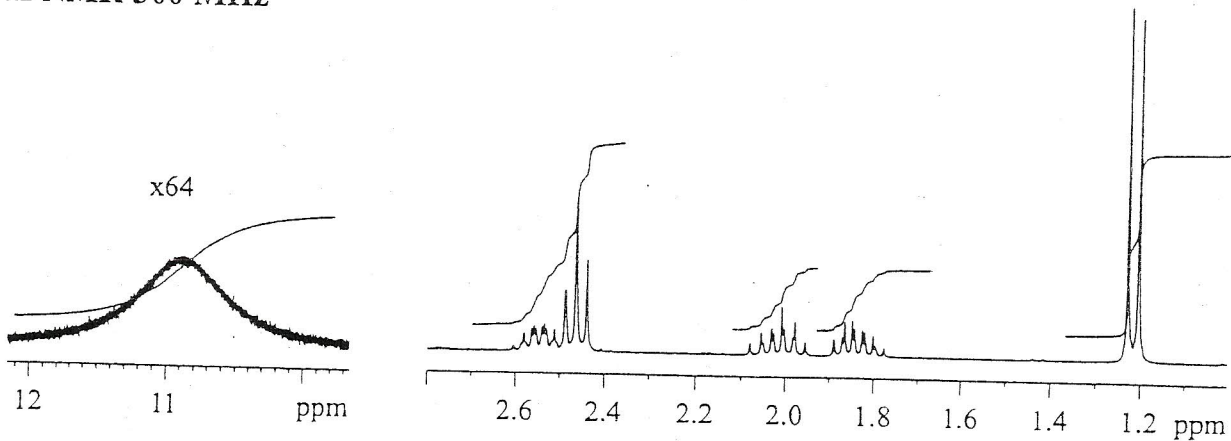
WIDMO MAS



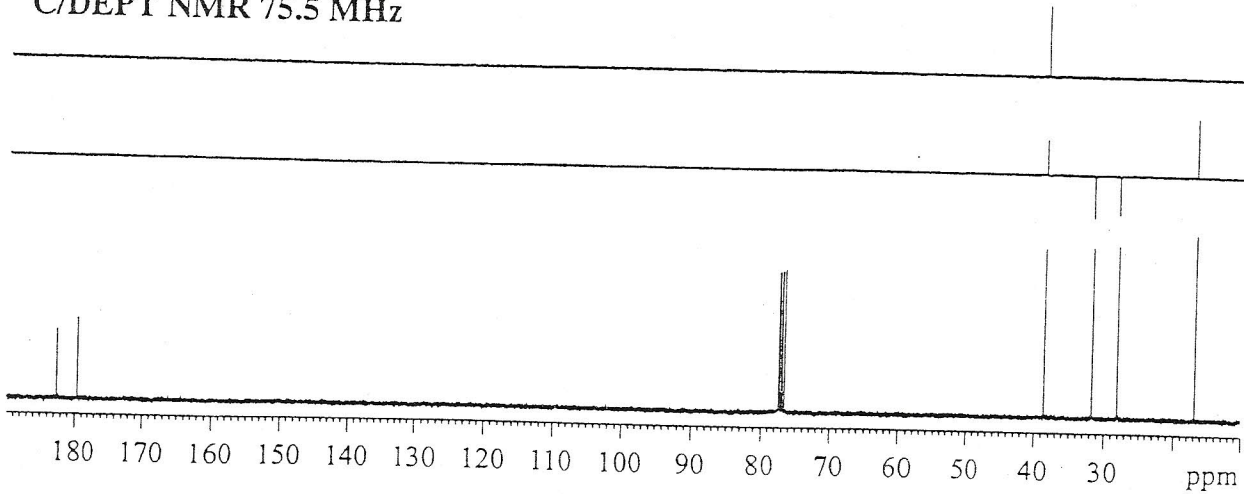
IR



¹H NMR 300 MHz



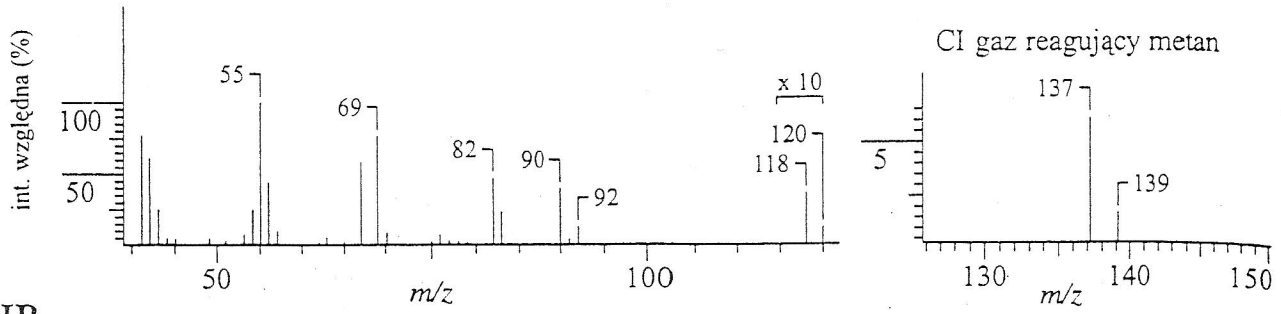
¹³C/DEPT NMR 75.5 MHz



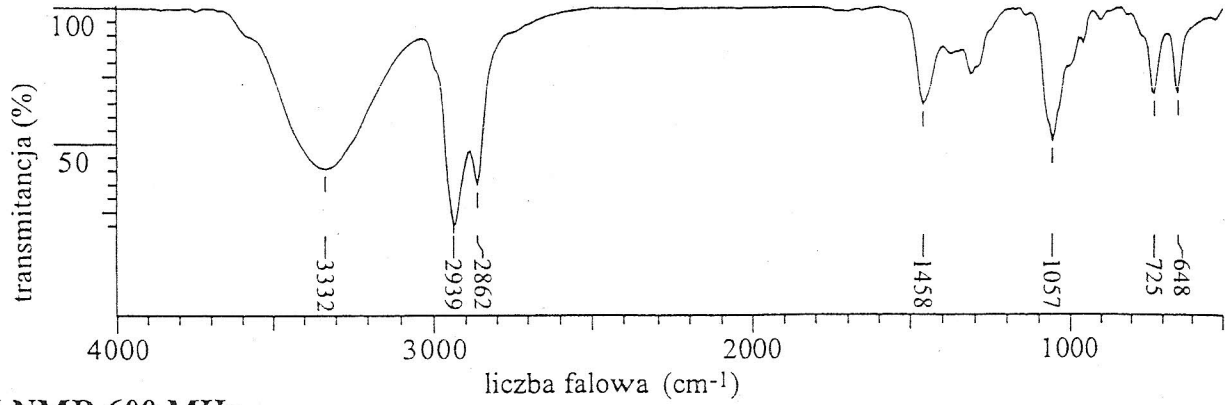
WIDMO MAS

VS14

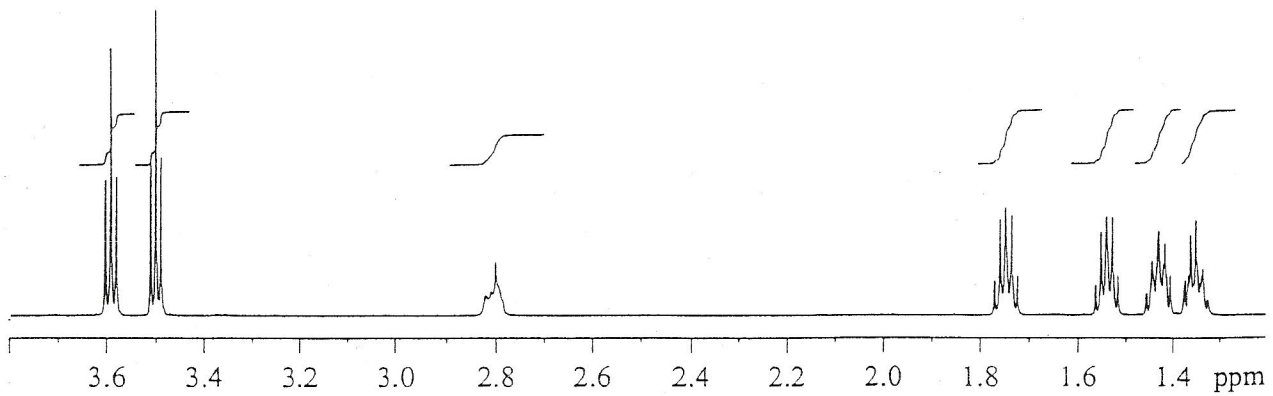
SV14



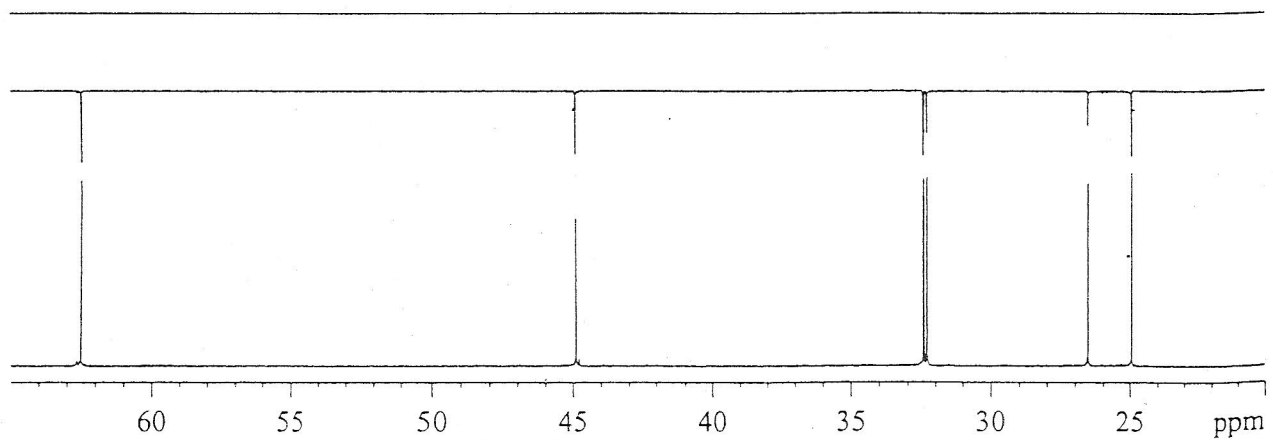
IR



¹H NMR 600 MHz

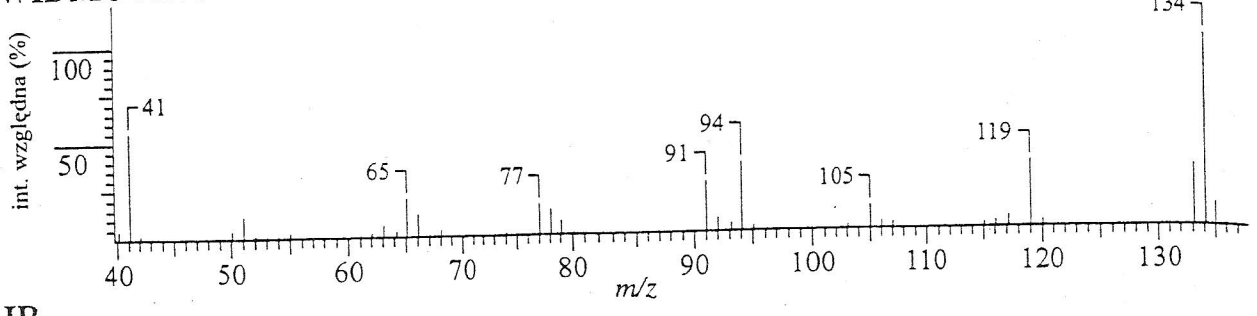


¹³C/DEPT NMR 150.9 MHz

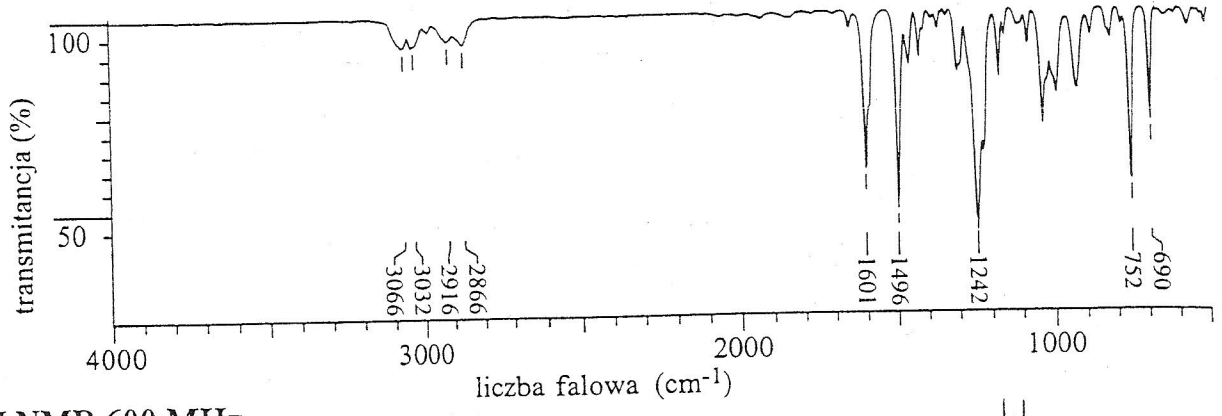


SV 15

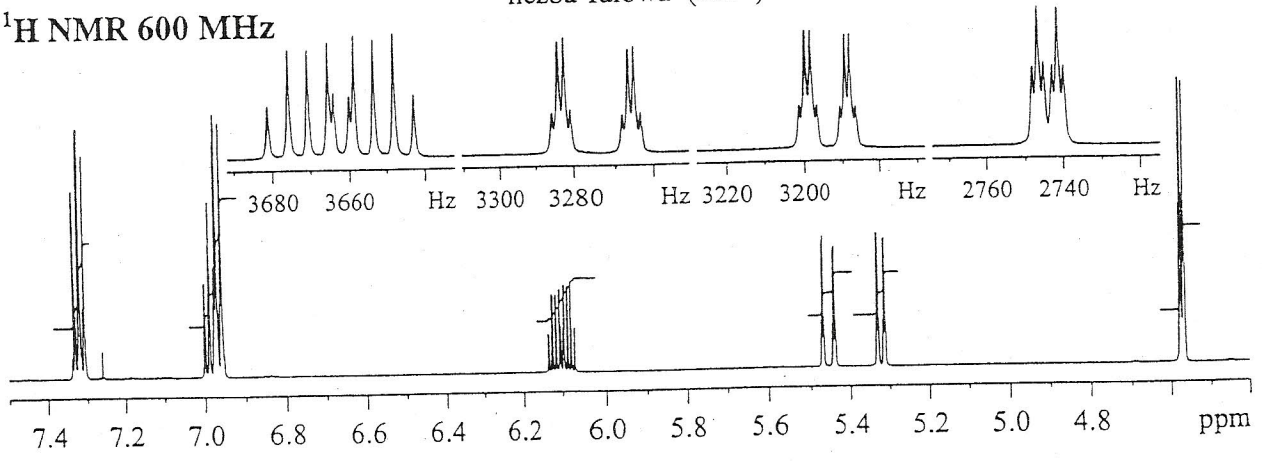
WIDMO MAS VS15



IR



¹H NMR 600 MHz



¹³C/DEPT NMR 150.9 MHz

